

# AP2A2 Rabbit Polyclonal Antibody



CAB5391

---

## Product Information

### Size:

20uL, 50uL, 100uL, 200uL

### Observed MW:

118kDa

### Calculated MW:

73kDa/103kDa/104kDa

### Applications:

WB

### Reactivity:

Human, Mouse

## Protein Background

The protein encoded by this gene is a subunit of the AP-2 adaptor protein complex, which is involved in linking lipid and protein membrane components with the clathrin lattice. This interaction supports the formation of clathrin-coated vesicles, and the encoded subunit aids in the process by binding polyphosphoinositide-containing lipids in the cell membrane.

## Immunogen information

### Gene ID:

161

### Uniprot

O94973

### Synonyms:

AP2A2; ADTAB; CLAPA2; HIP-9; HIP9; HYPJ

## Antibody Information

### Recommended dilutions:

WB 1:500 - 1:2000

### Source:

Rabbit

### Isotype:

IgG

### Purification:

Affinity purification

### Immunogen:

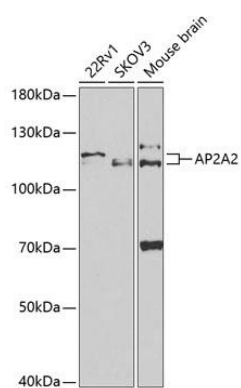
Recombinant fusion protein containing a sequence corresponding to amino acids 590-939 of human AP2A2 (NP\_036437.1).

### Storage:

Store at -20°C. Avoid freeze / thaw cycles. Buffer: PBS with 0.02% sodium azide, 50% glycerol, pH7.3.

## Product Images

---



Western blot analysis of extracts of various cell lines, using AP2A2 antibody (CAB5391) at 1:1000 dilution. Secondary antibody: HRP Goat Anti-Rabbit IgG (H+L) (CABS014) at 1:10000 dilution. Lysates/proteins: 25ug per lane. Blocking buffer: 3% nonfat dry milk in TBST.