

ASH2L Rabbit Polyclonal Antibody



CAB5392

Product Information

Size:

20uL, 50uL, 100uL, 200uL

Observed MW:

65kDa/90kDa

Calculated MW:

56kDa/60kDa/68kDa

Applications:

WB IF

Reactivity:

Human, Mouse

Antibody Information

Recommended dilutions:

WB 1:500 - 1:2000 IF 1:20 - 1:50

Source:

Rabbit

Isotype:

IgG

Purification:

Affinity purification

Protein Background

Immunogen information

Gene ID:

9070

Uniprot

Q9UBL3

Synonyms:

ASH2L; ASH2; ASH2L1; ASH2L2; Bre2

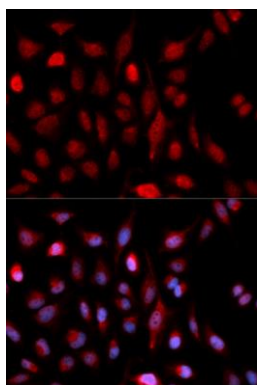
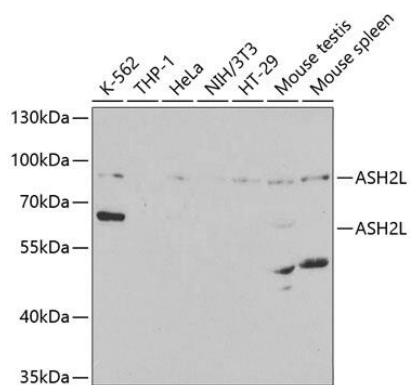
Immunogen:

Recombinant fusion protein containing a sequence corresponding to amino acids 235-534 of human ASH2L (NP_001098684.1).

Storage:

Store at -20°C. Avoid freeze / thaw cycles. Buffer: PBS with 0.02% sodium azide, 50% glycerol, pH7.3.

Product Images



Western blot analysis of extracts of various cell lines, using ASH2L antibody (CAB5392) at 1:1000 dilution. Secondary antibody: HRP Goat Anti-Rabbit IgG (H+L) (CABS014) at 1:10000 dilution. Lysates/proteins: 25ug per lane. Blocking buffer: 3% nonfat dry milk in TBST. Detection: ECL Basic Kit (CABM00020). Exposure time: 90s.

Immunofluorescence analysis of U2OS cells using ASH2L antibody (CAB5392). Blue: DAPI for nuclear staining.