

# CUL4B Rabbit Polyclonal Antibody



CAB5400

## Product Information

### Size:

20uL, 50uL, 100uL, 200uL

### Observed MW:

115kDa

### Calculated MW:

84kDa/102kDa/103kDa

### Applications:

WB IHC IF

### Reactivity:

Human, Mouse, Rat

## Protein Background

This gene is a member of the cullin family. The encoded protein forms a complex that functions as an E3 ubiquitin ligase and catalyzes the polyubiquitination of specific protein substrates in the cell. The protein interacts with a ring finger protein, and is required for the proteolysis of several regulators of DNA replication including chromatin licensing and DNA replication factor 1 and cyclin E. Multiple transcript variants encoding different isoforms have been found for this gene.

## Immunogen information

### Gene ID:

8450

### Uniprot

Q13620

### Synonyms:

CUL4B; CUL-4B; MRXHF2; MRXS15; MRXSC; SFM2; cullin-4B

## Antibody Information

### Recommended dilutions:

WB 1:500 - 1:2000 IHC 1:50  
- 1:200 IF 1:50 - 1:200

### Source:

Rabbit

### Isotype:

IgG

### Purification:

Affinity purification

### Immunogen:

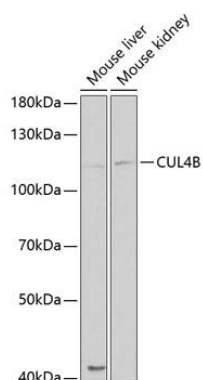
Recombinant fusion protein containing a sequence corresponding to amino acids 1-200 of human CUL4B (NP\_003579.3).

### Storage:

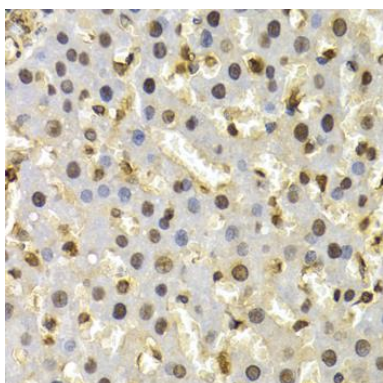
Store at -20°C. Avoid freeze / thaw cycles. Buffer: PBS with 0.02% sodium azide, 50% glycerol, pH7.3.

## Product Images

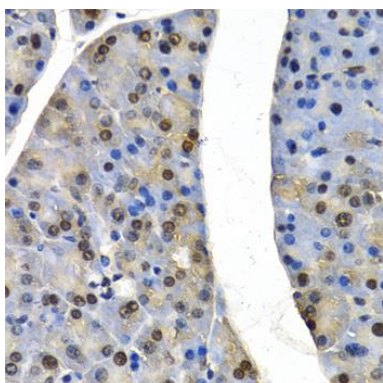
---



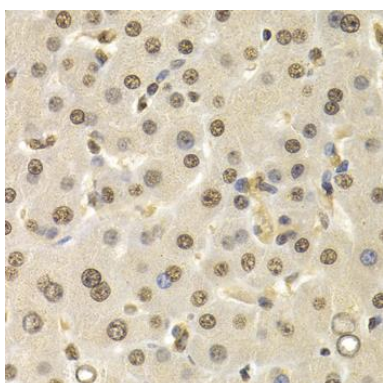
Western blot analysis of extracts of various cell lines, using CUL4B antibody (CAB5400) at 1:1000 dilution. Secondary antibody: HRP Goat Anti-Rabbit IgG (H+L) (CABS014) at 1:10000 dilution. Lysates/proteins: 25ug per lane. Blocking buffer: 3% nonfat dry milk in TBST. Detection: ECL Basic Kit (CABM00020). Exposure time: 60s.



Immunohistochemistry of paraffin-embedded rat liver using CUL4B antibody (CAB5400) at dilution of 1:200 (40x lens).



Immunohistochemistry of paraffin-embedded mouse pancreas using CUL4B antibody (CAB5400) at dilution of 1:200 (40x lens).



Immunohistochemistry of paraffin-embedded human liver cancer using CUL4B antibody (CAB5400) at dilution of 1:200 (40x lens).