

CYB5A Rabbit Polyclonal Antibody



CAB5401

Product Information

Size:

20uL, 50uL, 100uL, 200uL

Observed MW:

17kDa

Calculated MW:

11kDa/14kDa/15kDa

Applications:

WB IHC IF

Reactivity:

Human, Mouse, Rat

Protein Background

The protein encoded by this gene is a membrane-bound cytochrome that reduces ferric hemoglobin (methemoglobin) to ferrous hemoglobin, which is required for stearyl-CoA-desaturase activity. Defects in this gene are a cause of type IV hereditary methemoglobinemia. Three transcript variants encoding different isoforms have been found for this gene.

Immunogen information

Gene ID:

1528

Uniprot

P00167

Synonyms:

CYB5A; CYB5; MCB5

Antibody Information

Recommended dilutions:

WB 1:500 - 1:2000 IHC 1:50
- 1:200 IF 1:50 - 1:200

Source:

Rabbit

Isotype:

IgG

Purification:

Affinity purification

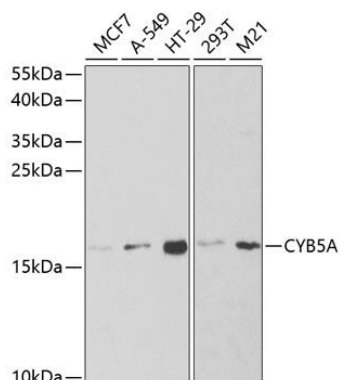
Immunogen:

Recombinant fusion protein containing a sequence corresponding to amino acids 1-100 of human CYB5A (NP_683725.1).

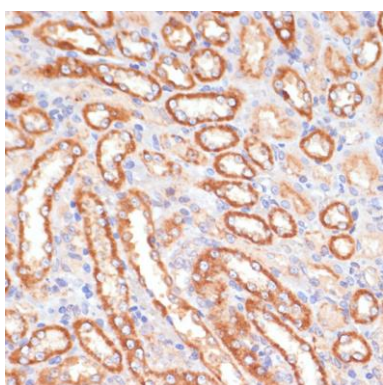
Storage:

Store at -20°C. Avoid freeze / thaw cycles. Buffer: PBS with 0.02% sodium azide, 50% glycerol, pH7.3.

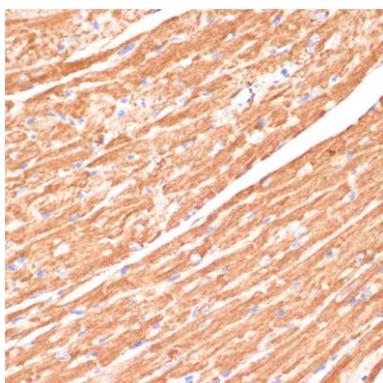
Product Images



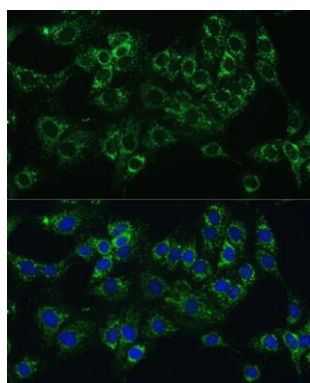
Western blot analysis of extracts of various cell lines, using CYB5A antibody (CAB5401) at 1:1000 dilution. Secondary antibody: HRP Goat Anti-Rabbit IgG (H+L) (CABS014) at 1:10000 dilution. Lysates/proteins: 25ug per lane. Blocking buffer: 3% nonfat dry milk in TBST. Detection: ECL Basic Kit (CABM00020). Exposure time: 120s.



Immunohistochemistry of paraffin-embedded rat kidney using CYB5A antibody (CAB5401) at dilution of 1:100 (40x lens).



Immunohistochemistry of paraffin-embedded mouse heart using CYB5A antibody (CAB5401) at dilution of 1:100 (40x lens).



Immunofluorescence analysis of C6 cells using CYB5A Polyclonal Antibody (CAB5401) at dilution of 1:100 (40x lens). Blue: DAPI for nuclear staining.