

DLD Rabbit Polyclonal Antibody



CAB5403

Product Information

Size:

20uL, 50uL, 100uL, 200uL

Observed MW:

55kDa

Calculated MW:

43kDa/49kDa/54kDa

Applications:

WB IHC

Reactivity:

Human, Mouse

Antibody Information

Recommended dilutions:

WB 1:500 - 1:2000 IHC 1:50
- 1:200

Source:

Rabbit

Isotype:

IgG

Purification:

Affinity purification

Protein Background

This gene encodes a member of the class-I pyridine nucleotide-disulfide oxidoreductase family. The encoded protein has been identified as a moonlighting protein based on its ability to perform mechanistically distinct functions. In homodimeric form, the encoded protein functions as a dehydrogenase and is found in several multi-enzyme complexes that regulate energy metabolism. However, as a monomer, this protein can function as a protease. Mutations in this gene have been identified in patients with E3-deficient maple syrup urine disease and lipoamide dehydrogenase deficiency. Alternative splicing results in multiple transcript variants.

Immunogen information

Gene ID:

1738

Uniprot

P09622

Synonyms:

DLD; DLDD; DLDH; E3; GCSL; LAD; PHE3

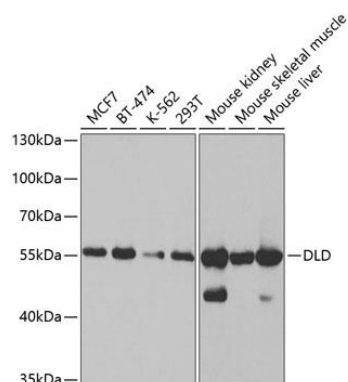
Immunogen:

Recombinant fusion protein containing a sequence corresponding to amino acids 36-300 of human DLD (NP_000099.2).

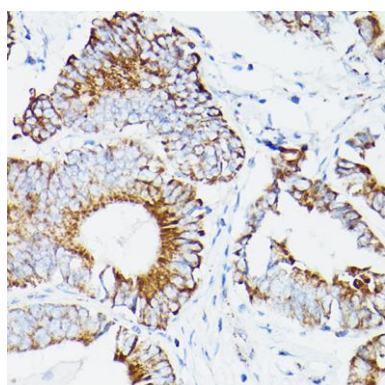
Storage:

Store at -20°C. Avoid freeze / thaw cycles. Buffer: PBS with 0.02% sodium azide, 50% glycerol, pH7.3.

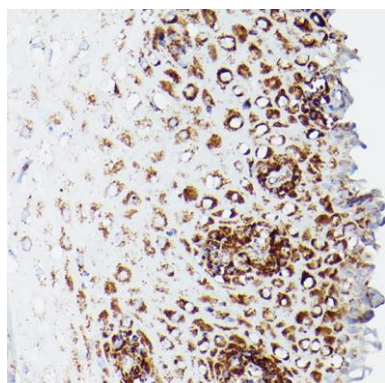
Product Images



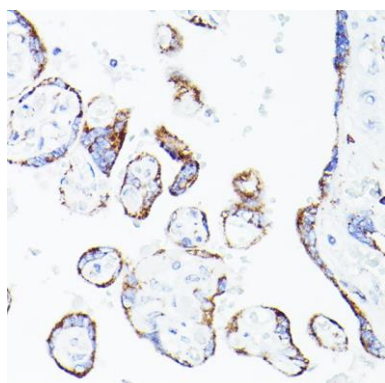
Western blot analysis of extracts of various cell lines, using DLD antibody (CAB5403) at 1:1000 dilution. Secondary antibody: HRP Goat Anti-Rabbit IgG (H+L) (CABS014) at 1:10000 dilution. Lysates/proteins: 25ug per lane. Blocking buffer: 3% nonfat dry milk in TBST. Detection: ECL Basic Kit (CABM00020). Exposure time: 5s.



Immunohistochemistry of paraffin-embedded human colon carcinoma using DLD Rabbit pAb (CAB5403) at dilution of 1:500 (40x lens).



Immunohistochemistry of paraffin-embedded human esophageal using DLD Rabbit pAb (CAB5403) at dilution of 1:500 (40x lens).



Immunohistochemistry of paraffin-embedded human placenta using DLD Rabbit pAb (CAB5403) at dilution of 1:500 (40x lens).