

EIF4B Rabbit Polyclonal Antibody



CAB5405

Product Information

Size:

20uL, 50uL, 100uL, 200uL

Observed MW:

80kDa

Calculated MW:

64kDa/69kDa

Applications:

WB IHC IF IP

Reactivity:

Human, Mouse

Antibody Information

Recommended dilutions:

WB 1:500 - 1:2000 IHC 1:50
- 1:200 IF 1:50 - 1:100 IP
1:50 - 1:200

Source:

Rabbit

Isotype:

IgG

Purification:

Affinity purification

Protein Background

Immunogen information

Gene ID:

1975

Uniprot

P23588

Synonyms:

EIF4B; EIF-4B; PRO1843

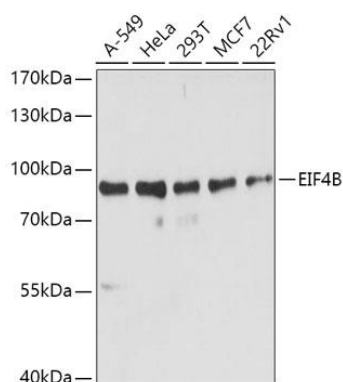
Immunogen:

Recombinant fusion protein containing a sequence corresponding to amino acids 352-611 of human EIF4B (NP_001408.2).

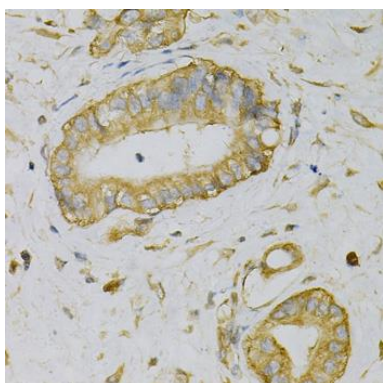
Storage:

Store at -20°C. Avoid freeze / thaw cycles. Buffer: PBS with 0.02% sodium azide, 50% glycerol, pH7.3.

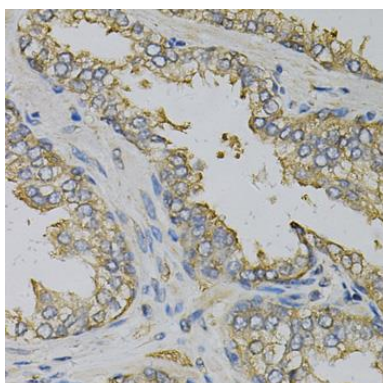
Product Images



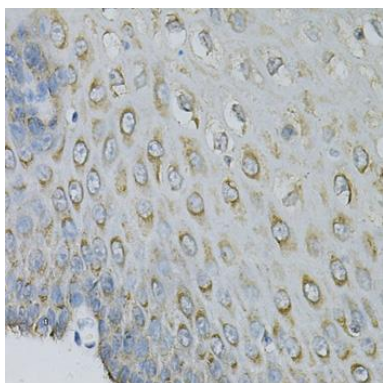
Western blot analysis of extracts of various cell lines, using EIF4B antibody (CAB5405) at 1:1000 dilution. Secondary antibody: HRP Goat Anti-Rabbit IgG (H+L) (CABS014) at 1:10000 dilution. Lysates/proteins: 25ug per lane. Blocking buffer: 3% nonfat dry milk in TBST. Detection: ECL Basic Kit (CABM00020). Exposure time: 1s.



Immunohistochemistry of paraffin-embedded human liver cancer using EIF4B Antibody (CAB5405) at dilution of 1:100 (40x lens).



Immunohistochemistry of paraffin-embedded human prostate using EIF4B Antibody (CAB5405) at dilution of 1:100 (40x lens).



Immunohistochemistry of paraffin-embedded human esophagus using EIF4B Antibody (CAB5405) at dilution of 1:100 (40x lens).