

SERPINB3 Rabbit Polyclonal Antibody



CAB5418

Product Information

Size:

20uL, 50uL, 100uL, 200uL

Observed MW:

45kDa

Calculated MW:

38kDa/44kDa

Applications:

WB

Reactivity:

Human, Mouse

Antibody Information

Recommended dilutions:

WB 1:500 - 1:2000

Source:

Rabbit

Isotype:

IgG

Purification:

Affinity purification

Protein Background

Immunogen information

Gene ID:

6317

Uniprot

P29508

Synonyms:

SERPINB3; HsT1196; SCC; SCCA-1; SCCA-PD; SCCA1; SSCA1; T4-A; serpin B3

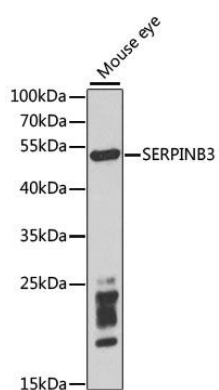
Immunogen:

Recombinant fusion protein containing a sequence corresponding to amino acids 1-230 of human SERPINB3 (NP_008850.1).

Storage:

Store at -20°C. Avoid freeze / thaw cycles. Buffer: PBS with 0.02% sodium azide, 50% glycerol, pH7.3.

Product Images



Western blot analysis of extracts of mouse eye, using SERPINB3 antibody (CAB5418) at 1:1000 dilution. Secondary antibody: HRP Goat Anti-Rabbit IgG (H+L) (CABS014) at 1:10000 dilution. Lysates/proteins: 25ug per lane. Blocking buffer: 3% nonfat dry milk in TBST. Detection: ECL Basic Kit (CABM00020). Exposure time: 90s.