

# STXBP1 Rabbit Polyclonal Antibody



CAB5420

---

## Product Information

### Size:

20uL, 50uL, 100uL, 200uL

### Observed MW:

68kDa

### Calculated MW:

67kDa/68kDa

### Applications:

WB IHC IF

### Reactivity:

Human, Mouse, Rat,  
Zebrafish

## Antibody Information

### Recommended dilutions:

WB 1:500 - 1:2000 IHC 1:50  
- 1:200 IF 1:50 - 1:200

### Source:

Rabbit

### Isotype:

IgG

### Purification:

Affinity purification

## Protein Background

This gene encodes a syntaxin-binding protein. The encoded protein appears to play a role in release of neurotransmitters via regulation of syntaxin, a transmembrane attachment protein receptor. Mutations in this gene have been associated with infantile epileptic encephalopathy-4. Alternatively spliced transcript variants have been described.

## Immunogen information

### Gene ID:

6812

### Uniprot

P61764

### Synonyms:

STXBP1; MUNC18-1; NSEC1; P67; RBSEC1; UNC18

### Immunogen:

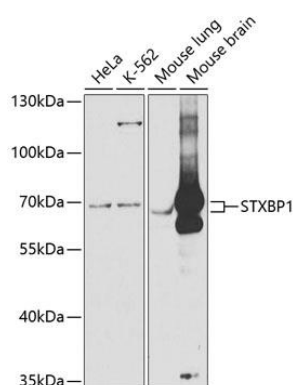
Recombinant fusion protein containing a sequence corresponding to amino acids 295-594 of human STXBP1 (NP\_001027392.1).

### Storage:

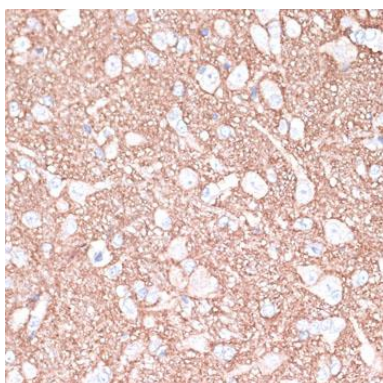
Store at -20°C. Avoid freeze / thaw cycles. Buffer: PBS with 0.02% sodium azide, 50% glycerol, pH7.3.

## Product Images

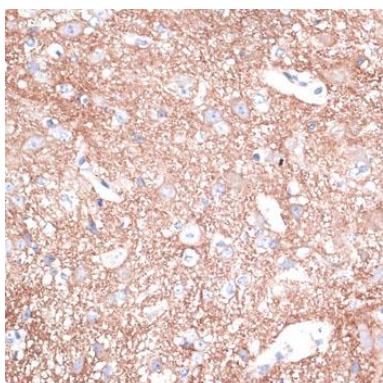
---



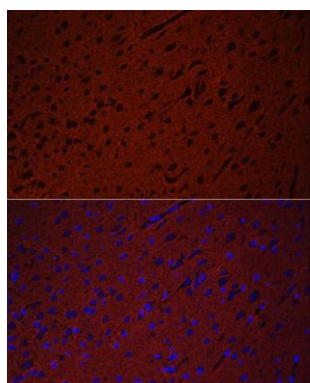
Western blot analysis of extracts of various cell lines, using STXBP1 antibody (CAB5420) at 1:1000 dilution. Secondary antibody: HRP Goat Anti-Rabbit IgG (H+L) (CABS014) at 1:10000 dilution. Lysates/proteins: 25ug per lane. Blocking buffer: 3% nonfat dry milk in TBST. Detection: ECL Basic Kit (CABM00020). Exposure time: 60s.



Immunohistochemistry of paraffin-embedded rat brain using STXBP1 antibody (CAB5420) at dilution of 1:100 (40x lens).



Immunohistochemistry of paraffin-embedded mouse spinal cord using STXBP1 antibody (CAB5420) at dilution of 1:100 (40x lens).



Immunofluorescence analysis of rat brain using STXBP1 antibody (CAB5420) at dilution of 1:50. Blue: DAPI for nuclear staining.