

# TFDP1 Rabbit Polyclonal Antibody



CAB5422

## Product Information

### Size:

20uL, 50uL, 100uL, 200uL

### Observed MW:

45kDa

### Calculated MW:

34kDa/45kDa

### Applications:

WB IHC

### Reactivity:

Human, Mouse

## Protein Background

This gene encodes a member of a family of transcription factors that heterodimerize with E2F proteins to enhance their DNA-binding activity and promote transcription from E2F target genes. The encoded protein functions as part of this complex to control the transcriptional activity of numerous genes involved in cell cycle progression from G1 to S phase. Alternative splicing results in multiple transcript variants. Pseudogenes of this gene are found on chromosomes 1, 15, and X.

## Immunogen information

### Gene ID:

7027

### Uniprot

Q14186

### Synonyms:

TFDP1; DILC; DP1; DRTF1; Dp-1

## Antibody Information

### Recommended dilutions:

WB 1:500 - 1:2000 IHC 1:50 - 1:200

### Source:

Rabbit

### Isotype:

IgG

### Purification:

Affinity purification

### Immunogen:

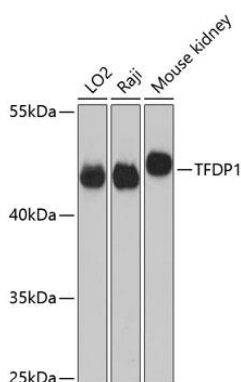
Recombinant fusion protein containing a sequence corresponding to amino acids 1-290 of human TFDP1 (NP\_009042.1).

### Storage:

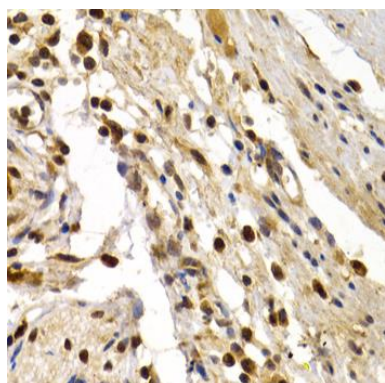
Store at -20°C. Avoid freeze / thaw cycles. Buffer: PBS with 0.02% sodium azide, 50% glycerol, pH7.3.

## Product Images

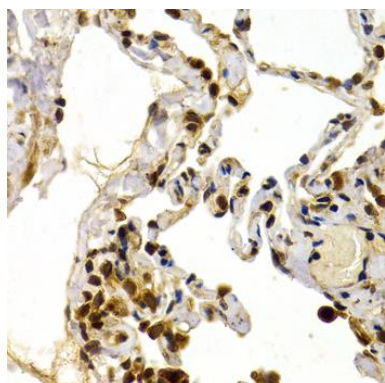
---



Western blot analysis of extracts of various cell lines, using TFDP1 antibody (CAB5422) at 1:3000 dilution. Secondary antibody: HRP Goat Anti-Rabbit IgG (H+L) (CABS014) at 1:10000 dilution. Lysates/proteins: 25ug per lane. Blocking buffer: 3% nonfat dry milk in TBST. Detection: ECL Basic Kit (CABM00020). Exposure time: 90s.



Immunohistochemistry of paraffin-embedded human colon damage using TFDP1 antibody (CAB5422) at dilution of 1:200 (40x lens).



Immunohistochemistry of paraffin-embedded human lung using TFDP1 antibody (CAB5422) at dilution of 1:200 (40x lens).