

# ORC6 Rabbit Polyclonal Antibody



CAB5426

## Product Information

### Size:

20uL, 50uL, 100uL, 200uL

### Observed MW:

28kDa

### Calculated MW:

28kDa

### Applications:

WB IHC IF

### Reactivity:

Human, Mouse, Rat

## Antibody Information

### Recommended dilutions:

WB 1:500 - 1:2000 IHC 1:50  
- 1:200 IF 1:50 - 1:200

### Source:

Rabbit

### Isotype:

IgG

### Purification:

Affinity purification

## Protein Background

The origin recognition complex (ORC) is a highly conserved six subunit protein complex essential for the initiation of the DNA replication in eukaryotic cells. Studies in yeast demonstrated that ORC binds specifically to origins of replication and serves as a platform for the assembly of additional initiation factors such as Cdc6 and Mcm proteins. The protein encoded by this gene is a subunit of the ORC complex. Gene silencing studies with small interfering RNA demonstrated that this protein plays an essential role in coordinating chromosome replication and segregation with cytokinesis.

## Immunogen information

### Gene ID:

23594

### Uniprot

Q9Y5N6

### Synonyms:

ORC6; ORC6L

### Immunogen:

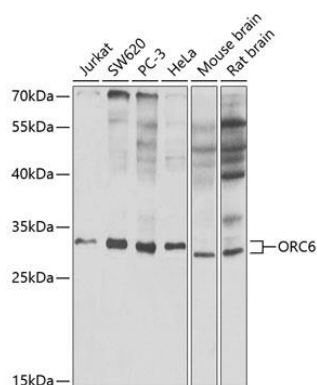
Recombinant fusion protein containing a sequence corresponding to amino acids 1-252 of human ORC6 (NP\_055136.1).

### Storage:

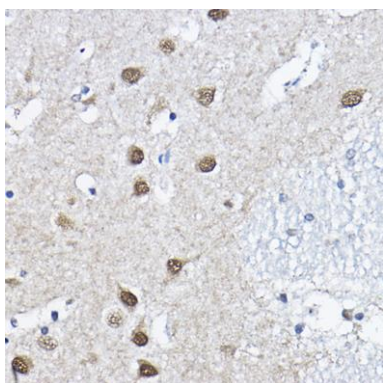
Store at -20°C. Avoid freeze / thaw cycles. Buffer: PBS with 0.02% sodium azide, 50% glycerol, pH7.3.

## Product Images

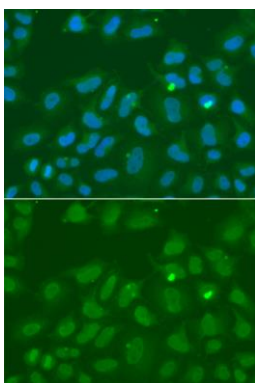
---



Western blot analysis of extracts of various cell lines, using ORC6 antibody (CAB5426) at 1:1000 dilution. Secondary antibody: HRP Goat Anti-Rabbit IgG (H+L) (CABS014) at 1:10000 dilution. Lysates/proteins: 25ug per lane. Blocking buffer: 3% nonfat dry milk in TBST. Detection: ECL Basic Kit (CABM00020). Exposure time: 30s.



Immunohistochemistry of paraffin-embedded human brain using ORC6 Rabbit pAb (CAB5426) at dilution of 1:200 (40x lens).



Immunofluorescence analysis of A549 cells using ORC6 antibody (CAB5426). Blue: DAPI for nuclear staining.