

# RPS6KA3 Rabbit Polyclonal Antibody



CAB5436

## Product Information

### Size:

20uL, 50uL, 100uL, 200uL

### Observed MW:

84kDa

### Calculated MW:

83kDa

### Applications:

WB IHC IF

### Reactivity:

Human, Mouse, Rat

## Antibody Information

### Recommended dilutions:

WB 1:500 - 1:2000 IHC 1:50  
- 1:200 IF 1:20 - 1:50

### Source:

Rabbit

### Isotype:

IgG

### Purification:

Affinity purification

## Protein Background

This gene encodes a member of the RSK (ribosomal S6 kinase) family of serine/threonine kinases. This kinase contains 2 non-identical kinase catalytic domains and phosphorylates various substrates, including members of the mitogen-activated kinase (MAPK) signalling pathway. The activity of this protein has been implicated in controlling cell growth and differentiation. Mutations in this gene have been associated with Coffin-Lowry syndrome (CLS).

## Immunogen information

### Gene ID:

6197

### Uniprot

P51812

### Synonyms:

RPS6KA3; CLS; HU-3; ISPK-1; MAPKAPK1B; MRX19; RSK; RSK2; S6K-alpha3; p90-RSK2; pp90RSK2

### Immunogen:

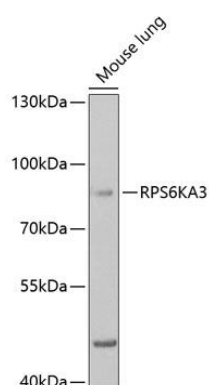
Recombinant fusion protein containing a sequence corresponding to amino acids 68-327 of human RPS6KA3 (NP\_004577.1).

### Storage:

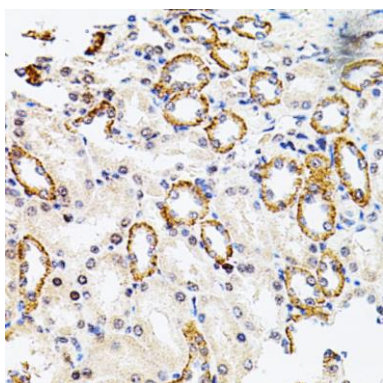
Store at -20°C. Avoid freeze / thaw cycles. Buffer: PBS with 0.02% sodium azide, 50% glycerol, pH7.3.

## Product Images

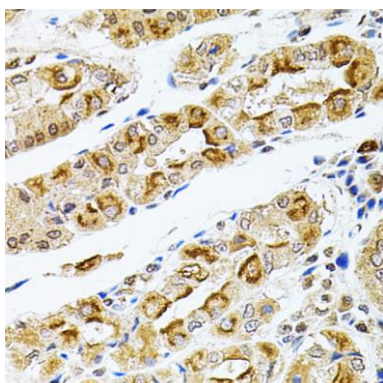
---



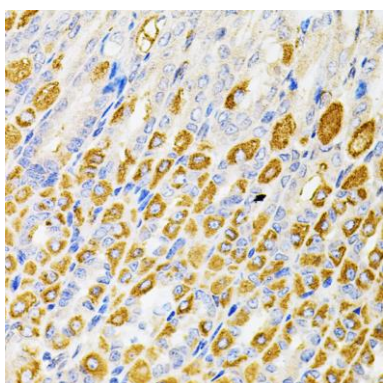
Western blot analysis of extracts of mouse lung, using RPS6KA3 antibody (CAB5436) at 1:1000 dilution. Secondary antibody: HRP Goat Anti-Rabbit IgG (H+L) (CABS014) at 1:10000 dilution. Lysates/proteins: 25ug per lane. Blocking buffer: 3% nonfat dry milk in TBST. Detection: ECL Basic Kit (CABM00020). Exposure time: 90s.



Immunohistochemistry of paraffin-embedded rat kidney using RPS6KA3 antibody (CAB5436) at dilution of 1:100 (40x lens).



Immunohistochemistry of paraffin-embedded human stomach using RPS6KA3 antibody (CAB5436) at dilution of 1:100 (40x lens).



Immunohistochemistry of paraffin-embedded mouse stomach using RPS6KA3 antibody (CAB5436) at dilution of 1:100 (40x lens).