

MGP Rabbit Polyclonal Antibody



CAB5439

Product Information

Size:

20uL, 50uL, 100uL, 200uL

Observed MW:

12kDa

Calculated MW:

12kDa/15kDa

Applications:

WB IHC

Reactivity:

Human, Mouse, Rat

Protein Background

The protein encoded by this gene is secreted and likely acts as an inhibitor of bone formation. The encoded protein is found in the organic matrix of bone and cartilage. Defects in this gene are a cause of Keutel syndrome (KS). Two transcript variants encoding different isoforms have been found for this gene.

Immunogen information

Gene ID:

4256

Uniprot

P08493

Synonyms:

MGP; GIG36; MGLAP; NTI

Antibody Information

Recommended dilutions:

WB 1:500 - 1:2000 IHC

1:100 - 1:200

Source:

Rabbit

Isotype:

IgG

Purification:

Affinity purification

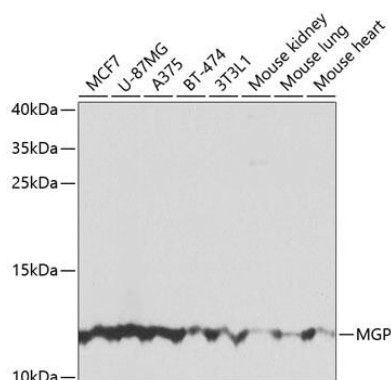
Immunogen:

Recombinant fusion protein containing a sequence corresponding to amino acids 20-103 of human MGP (NP_000891.2).

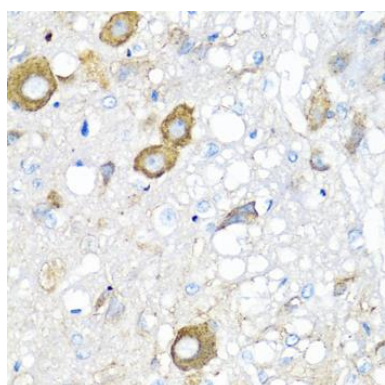
Storage:

Store at -20°C. Avoid freeze / thaw cycles. Buffer: PBS with 0.02% sodium azide, 50% glycerol, pH7.3.

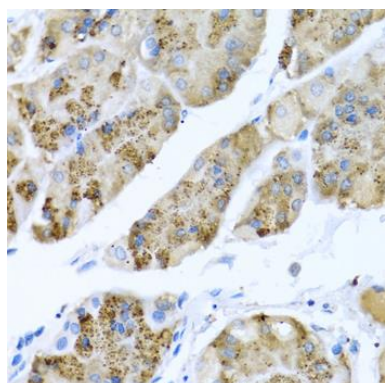
Product Images



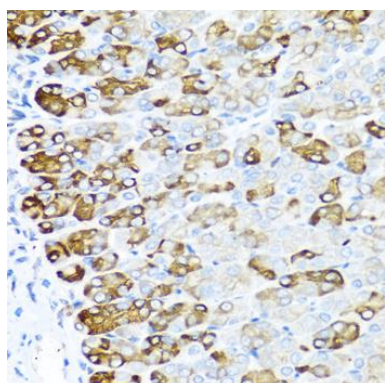
Western blot analysis of extracts of various cell lines, using MGP antibody (CAB5439) at 1:1000 dilution. Secondary antibody: HRP Goat Anti-Rabbit IgG (H+L) (CABS014) at 1:10000 dilution. Lysates/proteins: 25ug per lane. Blocking buffer: 3% nonfat dry milk in TBST. Detection: ECL Basic Kit (CABM00020). Exposure time: 120s.



Immunohistochemistry of paraffin-embedded rat brain using MGP antibody (CAB5439) at dilution of 1:100 (40x lens).



Immunohistochemistry of paraffin-embedded human stomach using MGP antibody (CAB5439) at dilution of 1:100 (40x lens).



Immunohistochemistry of paraffin-embedded mouse stomach using MGP antibody (CAB5439) at dilution of 1:100 (40x lens).