

KIF2C Rabbit Polyclonal Antibody



CAB5449

Product Information

Size:

20uL, 50uL, 100uL, 200uL

Observed MW:

95kDa

Calculated MW:

75kDa/81kDa

Applications:

WB IHC IF

Reactivity:

Human, Mouse, Rat

Protein Background

This gene encodes a kinesin-like protein that functions as a microtubule-dependent molecular motor. The encoded protein can depolymerize microtubules at the plus end, thereby promoting mitotic chromosome segregation. Alternative splicing results in multiple transcript variants.

Immunogen information

Gene ID:

11004

Uniprot

Q99661

Synonyms:

KIF2C; CT139; KNSL6; MCAK

Antibody Information

Recommended dilutions:

WB 1:500 - 1:2000 IHC 1:50
- 1:200 IF 1:50 - 1:200

Source:

Rabbit

Isotype:

IgG

Purification:

Affinity purification

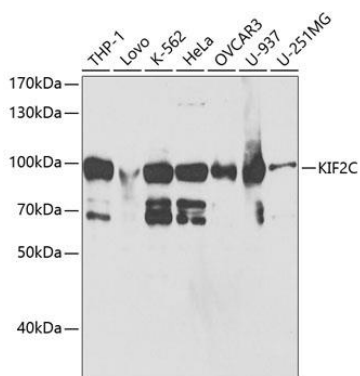
Immunogen:

Recombinant fusion protein containing a sequence corresponding to amino acids 1-190 of human KIF2C (NP_006836.2).

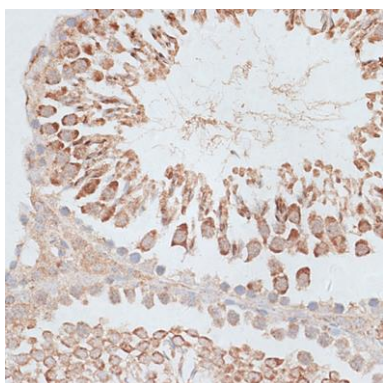
Storage:

Store at -20°C. Avoid freeze / thaw cycles. Buffer: PBS with 0.02% sodium azide, 50% glycerol, pH7.3.

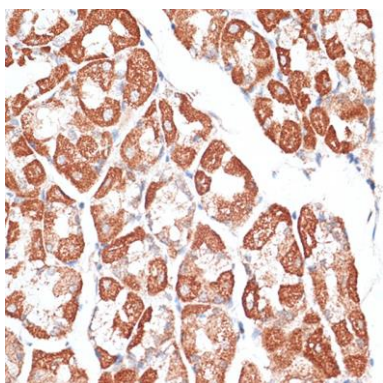
Product Images



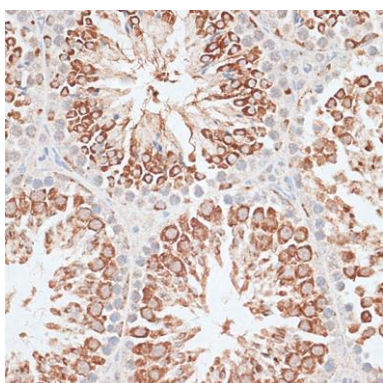
Western blot analysis of extracts of various cell lines, using KIF2C antibody (CAB5449) at 1:1000 dilution. Secondary antibody: HRP Goat Anti-Rabbit IgG (H+L) (CABS014) at 1:10000 dilution. Lysates/proteins: 25ug per lane. Blocking buffer: 3% nonfat dry milk in TBST.



Immunohistochemistry of paraffin-embedded Rat testis using KIF2C antibody (CAB5449) at dilution of 1:100 (40x lens).



Immunohistochemistry of paraffin-embedded Human stomach using KIF2C antibody (CAB5449) at dilution of 1:100 (40x lens).



Immunohistochemistry of paraffin-embedded Mouse testis using KIF2C antibody (CAB5449) at dilution of 1:100 (40x lens).