

FHL1 Rabbit Polyclonal Antibody



CAB5460

Product Information

Size:

20uL, 50uL, 100uL, 200uL

Observed MW:

40kDa

Calculated MW:

22kDa/31kDa/33kDa/34kDa/
36kDa

Applications:

WB IHC IF

Reactivity:

Human, Mouse

Antibody Information

Recommended dilutions:

WB 1:500 - 1:2000 IHC 1:50
- 1:200 IF 1:50 - 1:100

Source:

Rabbit

Isotype:

IgG

Purification:

Affinity purification

Protein Background

This gene encodes a member of the four-and-a-half-LIM-only protein family. Family members contain two highly conserved, tandemly arranged, zinc finger domains with four highly conserved cysteines binding a zinc atom in each zinc finger. Expression of these family members occurs in a cell- and tissue-specific mode and these proteins are involved in many cellular processes. Mutations in this gene have been found in patients with Emery-Dreifuss muscular dystrophy. Multiple alternately spliced transcript variants which encode different protein isoforms have been described.

Immunogen information

Gene ID:

2273

Uniprot

Q13642

Synonyms:

FHL1; FHL-1; FHL1A; FHL1B; FLH1A; KYOT; RBMX1A; RBMX1B;
SLIM; SLIM-1; SLIM1; SLIMMER; XMPMA

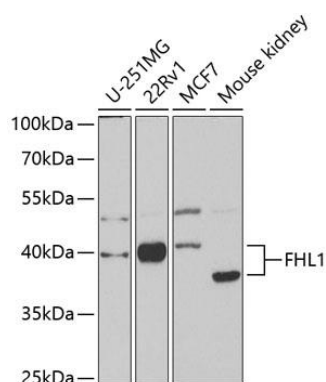
Immunogen:

Recombinant fusion protein containing a sequence corresponding to amino acids 27-296 of human FHL1 (NP_001153171.1).

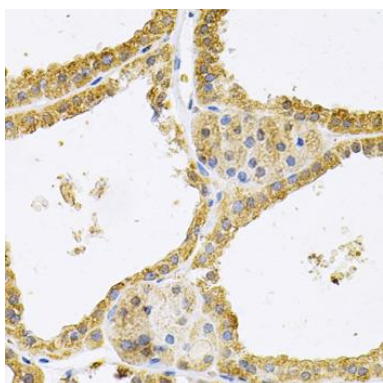
Storage:

Store at -20°C. Avoid freeze / thaw cycles. Buffer: PBS with 0.02% sodium azide, 50% glycerol, pH7.3.

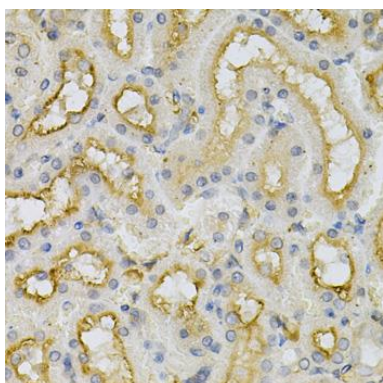
Product Images



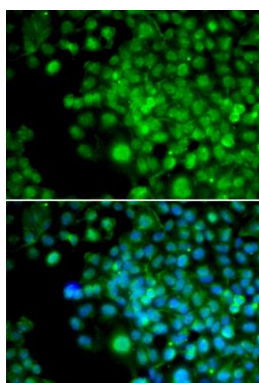
Western blot analysis of extracts of various cell lines, using FHL1 antibody (CAB5460) at 1:1000 dilution. Secondary antibody: HRP Goat Anti-Rabbit IgG (H+L) (CABS014) at 1:10000 dilution. Lysates/proteins: 25ug per lane. Blocking buffer: 3% nonfat dry milk in TBST. Detection: ECL Basic Kit (CABM00020). Exposure time: 90s.



Immunohistochemistry of paraffin-embedded human thyroid cancer using FHL1 Antibody (CAB5460) at dilution of 1:100 (40x lens).



Immunohistochemistry of paraffin-embedded mouse kidney using FHL1 Antibody (CAB5460) at dilution of 1:100 (40x lens).



Immunofluorescence analysis of HeLa cells using FHL1 antibody (CAB5460). Blue: DAPI for nuclear staining.