

GGH Rabbit Polyclonal Antibody



CAB5464

Product Information

Size:

20uL, 50uL, 100uL, 200uL

Observed MW:

32kDa

Calculated MW:

35kDa

Applications:

WB IF

Reactivity:

Human, Mouse

Protein Background

This gene catalyzes the hydrolysis of folylpoly-gamma-glutamates and antifolylpoly-gamma-glutamates by the removal of gamma-linked polyglutamates and glutamate.

Immunogen information

Gene ID:

8836

Uniprot

Q92820

Synonyms:

GGH; GH

Immunogen:

Recombinant fusion protein containing a sequence corresponding to amino acids 25-230 of human GGH (NP_003869.1).

Antibody Information

Recommended dilutions:

WB 1:500 - 1:2000 IF 1:50 - 1:100

Source:

Rabbit

Isotype:

IgG

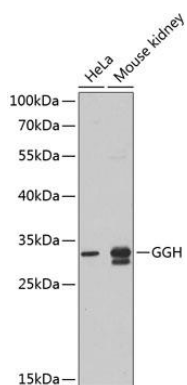
Purification:

Affinity purification

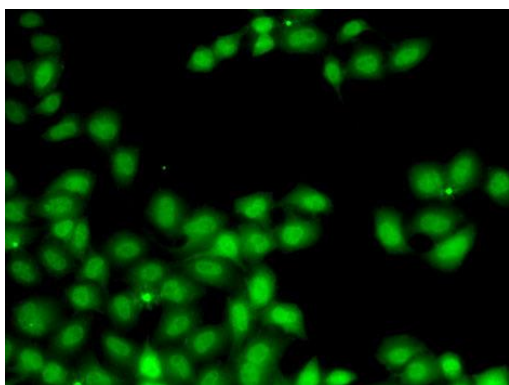
Storage:

Store at -20°C. Avoid freeze / thaw cycles. Buffer: PBS with 0.02% sodium azide, 50% glycerol, pH7.3.

Product Images



Western blot analysis of extracts of various cell lines, using GGH antibody (CAB5464) at 1:1000 dilution. Secondary antibody: HRP Goat Anti-Rabbit IgG (H+L) (CABS014) at 1:10000 dilution. Lysates/proteins: 25ug per lane. Blocking buffer: 3% nonfat dry milk in TBST. Detection: ECL Basic Kit (CABM00020). Exposure time: 90s.



Immunofluorescence analysis of A-549 cells using GGH antibody (CAB5464).