

MAGEA1 Rabbit Polyclonal Antibody



CAB5470

Product Information

Size:

20uL, 50uL, 100uL, 200uL

Observed MW:

45kDa

Calculated MW:

34kDa

Applications:

WB IHC IF

Reactivity:

Human

Protein Background

This gene is a member of the MAGEA gene family. The members of this family encode proteins with 50 to 80% sequence identity to each other. The promoters and first exons of the MAGEA genes show considerable variability, suggesting that the existence of this gene family enables the same function to be expressed under different transcriptional controls. The MAGEA genes are clustered at chromosomal location Xq28. They have been implicated in some hereditary disorders, such as dyskeratosis congenita.

Immunogen information

Gene ID:

4100

Uniprot

P43355

Synonyms:

MAGEA1; CT1.1; MAGE1

Antibody Information

Recommended dilutions:

WB 1:500 - 1:2000 IHC 1:50
- 1:200 IF 1:50 - 1:100

Source:

Rabbit

Isotype:

IgG

Purification:

Affinity purification

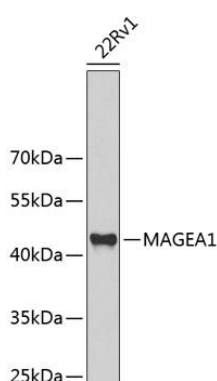
Immunogen:

Recombinant fusion protein containing a sequence corresponding to amino acids 1-309 of human MAGEA1 (NP_004979.3).

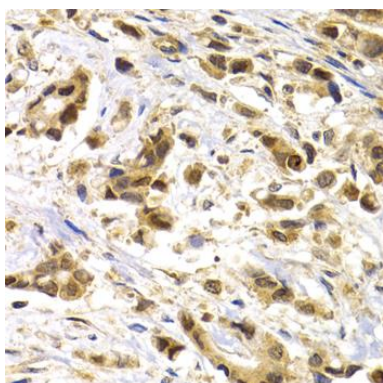
Storage:

Store at -20°C. Avoid freeze / thaw cycles. Buffer: PBS with 0.02% sodium azide, 50% glycerol, pH7.3.

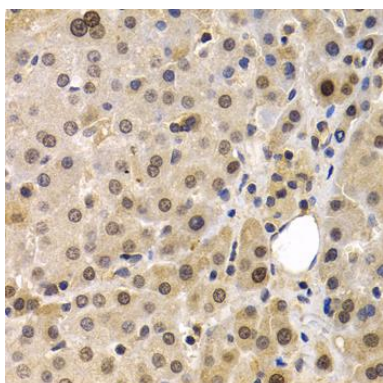
Product Images



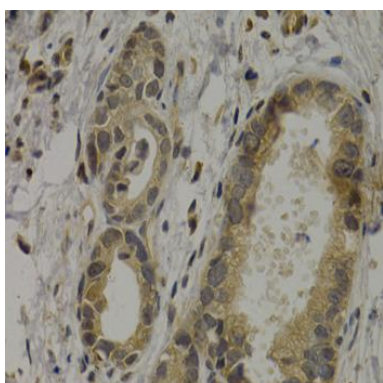
Western blot analysis of extracts of 22Rv1 cells, using MAGEA1 antibody (CAB5470) at 1:1000 dilution. Secondary antibody: HRP Goat Anti-Rabbit IgG (H+L) (CABS014) at 1:10000 dilution. Lysates/proteins: 25ug per lane. Blocking buffer: 3% nonfat dry milk in TBST. Detection: ECL Basic Kit (CABM00020). Exposure time: 30s.



Immunohistochemistry of paraffin-embedded human breast cancer using MAGEA1 antibody (CAB5470) at dilution of 1:200 (40x lens).



Immunohistochemistry of paraffin-embedded human liver cancer using MAGEA1 antibody (CAB5470) at dilution of 1:200 (40x lens).



Immunohistochemistry of paraffin-embedded human stomach cancer using MAGEA1 antibody (CAB5470) at dilution of 1:200 (40x lens).