

MCPH1 Rabbit Polyclonal Antibody



CAB5472

Product Information

Size:

20uL, 50uL, 100uL, 200uL

Observed MW:

60kDa

Calculated MW:

62kDa/67kDa/92kDa

Applications:

WB

Reactivity:

Human, Mouse

Antibody Information

Recommended dilutions:

WB 1:500 - 1:2000

Source:

Rabbit

Isotype:

IgG

Purification:

Affinity purification

Protein Background

This gene encodes a DNA damage response protein. The encoded protein may play a role in G2/M checkpoint arrest via maintenance of inhibitory phosphorylation of cyclin-dependent kinase 1. Mutations in this gene have been associated with primary autosomal recessive microcephaly 1 and premature chromosome condensation syndrome. Alternatively spliced transcript variants have been described.

Immunogen information

Gene ID:

79648

Uniprot

Q8NEM0

Synonyms:

MCPH1; BRIT1; MCT

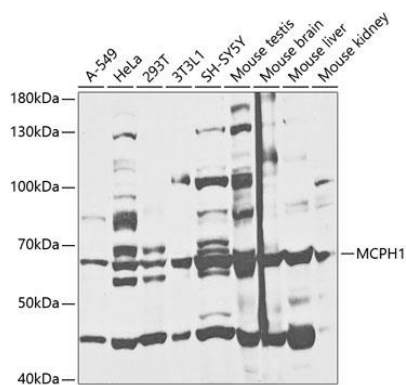
Immunogen:

Recombinant fusion protein containing a sequence corresponding to amino acids 263-562 of human MCPH1 (NP_001166046.1).

Storage:

Store at -20°C. Avoid freeze / thaw cycles. Buffer: PBS with 0.02% sodium azide, 50% glycerol, pH7.3.

Product Images



Western blot analysis of extracts of various cell lines, using MCPH1 antibody (CAB5472) at 1:1000 dilution. Secondary antibody: HRP Goat Anti-Rabbit IgG (H+L) (CABS014) at 1:10000 dilution. Lysates/proteins: 25ug per lane. Blocking buffer: 3% nonfat dry milk in TBST.