

PFKM Rabbit Polyclonal Antibody



CAB5477

Product Information

Size:

20uL, 50uL, 100uL, 200uL

Observed MW:

85kDa

Calculated MW:

81kDa/85kDa/93kDa

Applications:

WB IHC IF

Reactivity:

Human, Mouse, Rat

Protein Background

Three phosphofructokinase isozymes exist in humans: muscle, liver and platelet. These isozymes function as subunits of the mammalian tetramer phosphofructokinase, which catalyzes the phosphorylation of fructose-6-phosphate to fructose-1, 6-bisphosphate. Tetramer composition varies depending on tissue type. This gene encodes the muscle-type isozyme. Mutations in this gene have been associated with glycogen storage disease type VII, also known as Tarui disease. Alternatively spliced transcript variants have been described.

Immunogen information

Gene ID:

5213

Uniprot

P08237

Synonyms:

PFKM; ATP-PFK; GSD7; PFK-1; PFK1; PFKA; PFKX; PPP1R122

Antibody Information

Recommended dilutions:

WB 1:500 - 1:2000 IHC 1:50
- 1:200 IF 1:50 - 1:200

Source:

Rabbit

Isotype:

IgG

Purification:

Affinity purification

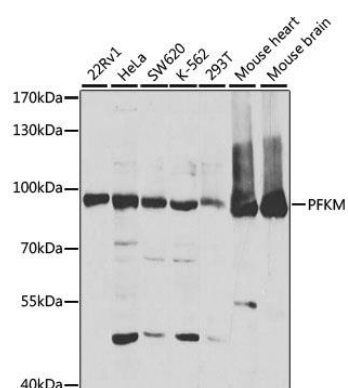
Immunogen:

Recombinant fusion protein containing a sequence corresponding to amino acids 501-780 of human PFKM (NP_001160160.1).

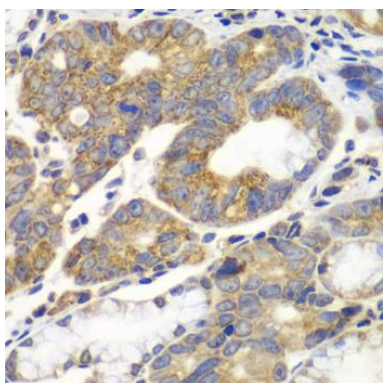
Storage:

Store at -20°C. Avoid freeze / thaw cycles. Buffer: PBS with 0.02% sodium azide, 50% glycerol, pH7.3.

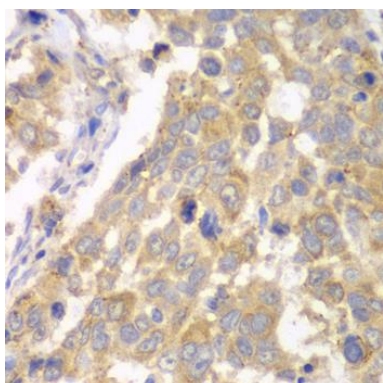
Product Images



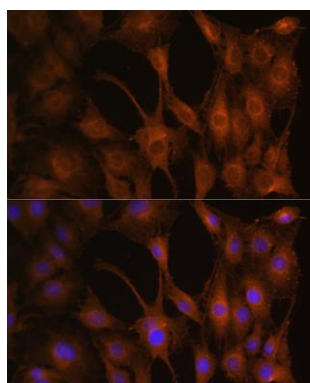
Western blot analysis of extracts of various cell lines, using PFKM antibody (CAB5477) at 1:1000 dilution. Secondary antibody: HRP Goat Anti-Rabbit IgG (H+L) (CABS014) at 1:10000 dilution. Lysates/proteins: 25ug per lane. Blocking buffer: 3% nonfat dry milk in TBST. Detection: ECL Basic Kit (CABM00020). Exposure time: 15s.



Immunohistochemistry of paraffin-embedded human gastric cancer using PFKM antibody (CAB5477) at dilution of 1:100 (40x lens).



Immunohistochemistry of paraffin-embedded human esophageal cancer using PFKM antibody (CAB5477) at dilution of 1:100 (40x lens).



Immunofluorescence analysis of C6 cells using PFKM Rabbit pAb (CAB5477) at dilution of 1:100 (40x lens). Blue: DAPI for nuclear staining.