

SIGMAR1 Rabbit Polyclonal Antibody



CAB5479

Product Information

Size:

20uL, 50uL, 100uL, 200uL

Observed MW:

25kDa

Calculated MW:

11kDa/21kDa/22kDa/25kDa

Applications:

WB IHC

Reactivity:

Human, Mouse, Rat

Antibody Information

Recommended dilutions:

WB 1:500 - 1:2000 IHC

1:100 - 1:200

Source:

Rabbit

Isotype:

IgG

Purification:

Affinity purification

Protein Background

This gene encodes a receptor protein that interacts with a variety of psychotomimetic drugs, including cocaine and amphetamines. The receptor is believed to play an important role in the cellular functions of various tissues associated with the endocrine, immune, and nervous systems. As indicated by its previous name, opioid receptor sigma 1 (OPRS1), the product of this gene was erroneously thought to function as an opioid receptor; it is now thought to be a non-opioid receptor. Mutations in this gene has been associated with juvenile amyotrophic lateral sclerosis 16. Alternative splicing of this gene results in transcript variants encoding distinct isoforms.

Immunogen information

Gene ID:

10280

Uniprot

Q99720

Synonyms:

SIGMAR1; ALS16; DSMA2; OPRS1; SIG-1R; SR-BP; SR-BP1; SRBP; hSigmaR1; sigma1R

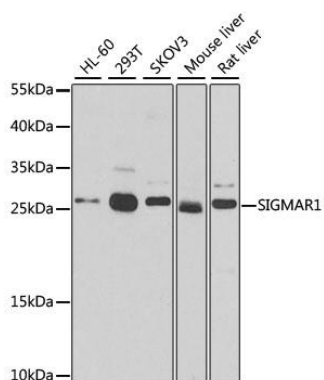
Immunogen:

Recombinant protein of human SIGMAR1

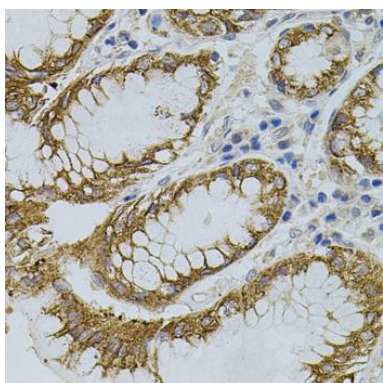
Storage:

Store at -20°C. Avoid freeze / thaw cycles. Buffer: PBS with 0.02% sodium azide, 50% glycerol, pH7.3.

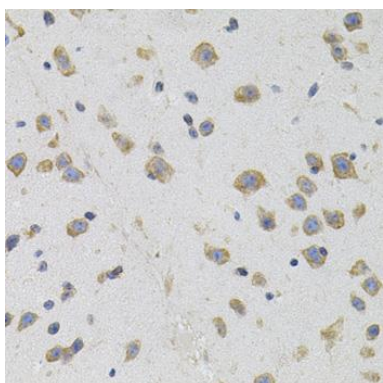
Product Images



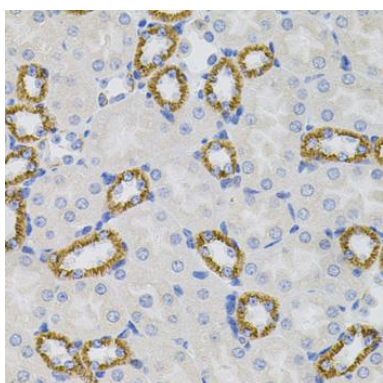
Western blot analysis of extracts of various cell lines, using SIGMAR1 antibody (CAB5479) at 1:500 dilution. Secondary antibody: HRP Goat Anti-Rabbit IgG (H+L) (CABS014) at 1:10000 dilution. Lysates/proteins: 25ug per lane. Blocking buffer: 3% nonfat dry milk in TBST. Detection: ECL Basic Kit (CABM00020). Exposure time: 90s.



Immunohistochemistry of paraffin-embedded human stomach using SIGMAR1 antibody (CAB5479) (40x lens).



Immunohistochemistry of paraffin-embedded mouse brain using SIGMAR1 antibody (CAB5479) (40x lens).



Immunohistochemistry of paraffin-embedded mouse kidney using SIGMAR1 antibody (CAB5479) (40x lens).