

PPP2R5C Rabbit Polyclonal Antibody



CAB5480

Product Information

Size:

20uL, 50uL, 100uL, 200uL

Observed MW:

68-71kDa

Calculated MW:

52kDa/56kDa/61kDa/62kDa/
64kDa

Applications:

WB IHC

Reactivity:

Human, Mouse, Rat

Antibody Information

Recommended dilutions:

WB 1:500 - 1:2000 IHC 1:50
- 1:200

Source:

Rabbit

Isotype:

IgG

Purification:

Affinity purification

Protein Background

The product of this gene belongs to the phosphatase 2A regulatory subunit B family. Protein phosphatase 2A is one of the four major Ser/Thr phosphatases, and it is implicated in the negative control of cell growth and division. It consists of a common heteromeric core enzyme, which is composed of a catalytic subunit and a constant regulatory subunit, that associates with a variety of regulatory subunits. The B regulatory subunit might modulate substrate selectivity and catalytic activity. This gene encodes a gamma isoform of the regulatory subunit B56 subfamily. Alternatively spliced transcript variants encoding different isoforms have been identified.

Immunogen information

Gene ID:

5527

Uniprot

Q13362

Synonyms:

PPP2R5C; B56G; PR61G; B56gamma

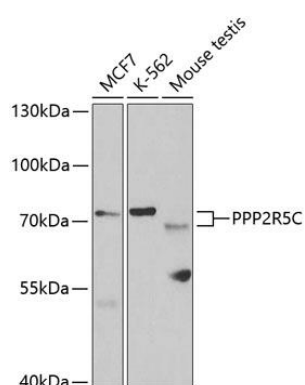
Immunogen:

Recombinant fusion protein containing a sequence corresponding to amino acids 1-320 of human PPP2R5C (NP_848702.1).

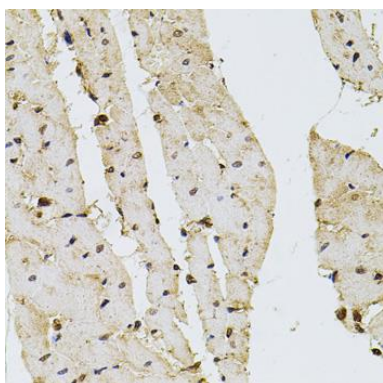
Storage:

Store at -20°C. Avoid freeze / thaw cycles. Buffer: PBS with 0.02% sodium azide, 50% glycerol, pH7.3.

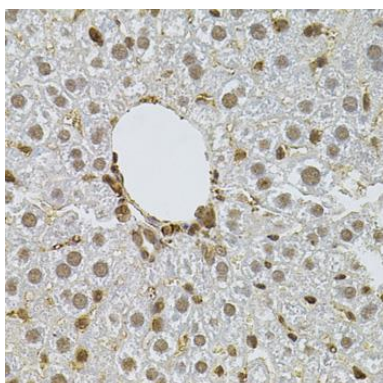
Product Images



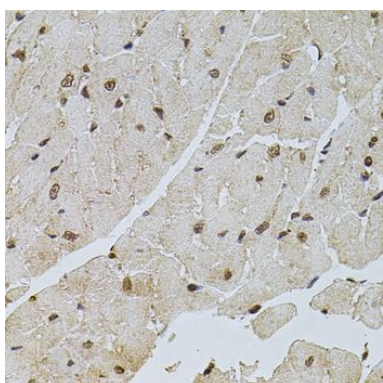
Western blot analysis of extracts of various cell lines, using PPP2R5C antibody (CAB5480) at 1:1000 dilution. Secondary antibody: HRP Goat Anti-Rabbit IgG (H+L) (CABS014) at 1:10000 dilution. Lysates/proteins: 25ug per lane. Blocking buffer: 3% nonfat dry milk in TBST. Detection: ECL Basic Kit (CABM00020). Exposure time: 30s.



Immunohistochemistry of paraffin-embedded rat heart using PPP2R5C antibody (CAB5480) at dilution of 1:100 (40x lens).



Immunohistochemistry of paraffin-embedded mouse liver using PPP2R5C antibody (CAB5480) at dilution of 1:100 (40x lens).



Immunohistochemistry of paraffin-embedded mouse heart using PPP2R5C antibody (CAB5480) at dilution of 1:100 (40x lens).