

PSRC1 Rabbit Polyclonal Antibody



CAB5484

Product Information

Size:

20uL, 50uL, 100uL, 200uL

Observed MW:

39kDa

Calculated MW:

16kDa/33kDa/35kDa/38kDa

Applications:

WB IHC IF

Reactivity:

Human, Mouse, Rat

Protein Background

This gene encodes a proline-rich protein that is a target for regulation by the tumor suppressor protein p53. The encoded protein plays an important role in mitosis by recruiting and regulating microtubule depolymerases that destabilize microtubules. Alternatively spliced transcript variants encoding different isoforms have been described.

Immunogen information

Gene ID:

84722

Uniprot

Q6PGN9

Synonyms:

PSRC1; DDA3; FP3214

Antibody Information

Recommended dilutions:

WB 1:500 - 1:2000 IHC 1:50
- 1:100 IF 1:50 - 1:100

Source:

Rabbit

Isotype:

IgG

Purification:

Affinity purification

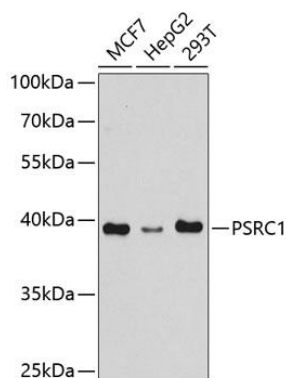
Immunogen:

Recombinant fusion protein containing a sequence corresponding to amino acids 1-215 of human PSRC1 (NP_001005290.1).

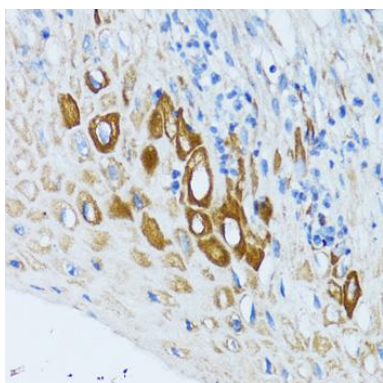
Storage:

Store at -20°C. Avoid freeze / thaw cycles. Buffer: PBS with 0.02% sodium azide, 50% glycerol, pH7.3.

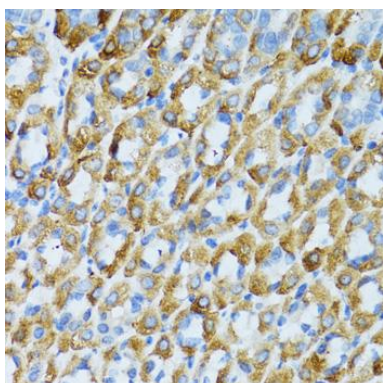
Product Images



Western blot analysis of extracts of various cell lines, using PSRC1 antibody (CAB5484) at 1:1000 dilution. Secondary antibody: HRP Goat Anti-Rabbit IgG (H+L) (CABS014) at 1:10000 dilution. Lysates/proteins: 25ug per lane. Blocking buffer: 3% nonfat dry milk in TBST. Detection: ECL Basic Kit (CABM00020). Exposure time: 90s.



Immunohistochemistry of paraffin-embedded human esophagus using PSRC1 antibody (CAB5484) at dilution of 1:100 (40x lens).



Immunohistochemistry of paraffin-embedded mouse stomach using PSRC1 antibody (CAB5484) at dilution of 1:100 (40x lens).