

RFC4 Rabbit Polyclonal Antibody



CAB5485

Product Information

Size:

20uL, 50uL, 100uL, 200uL

Observed MW:

40kDa

Calculated MW:

33kDa/39kDa

Applications:

WB IHC IF IP

Reactivity:

Human, Rat

Antibody Information

Recommended dilutions:

WB 1:500 - 1:2000 IHC 1:50
- 1:200 IF 1:50 - 1:100 IP
1:50 - 1:200

Source:

Rabbit

Isotype:

IgG

Purification:

Affinity purification

Protein Background

The elongation of primed DNA templates by DNA polymerase delta and DNA polymerase epsilon requires the accessory proteins proliferating cell nuclear antigen (PCNA) and replication factor C (RFC). RFC, also named activator 1, is a protein complex consisting of five distinct subunits of 140, 40, 38, 37, and 36 kD. This gene encodes the 37 kD subunit. This subunit forms a core complex with the 36 and 40 kDa subunits. The core complex possesses DNA-dependent ATPase activity, which was found to be stimulated by PCNA in an in vitro system. Alternatively spliced transcript variants encoding the same protein have been reported.

Immunogen information

Gene ID:

5984

Uniprot

P35249

Synonyms:

RFC4; A1; RFC37

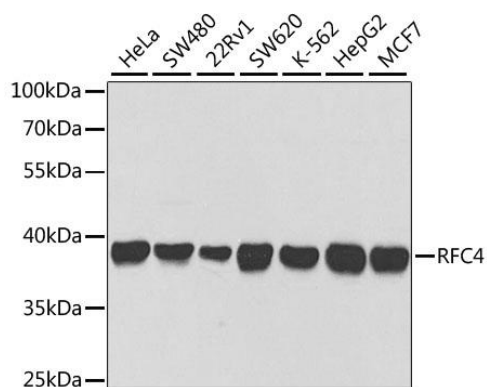
Immunogen:

Recombinant fusion protein containing a sequence corresponding to amino acids 204-363 of human RFC4 (NP_002907.1).

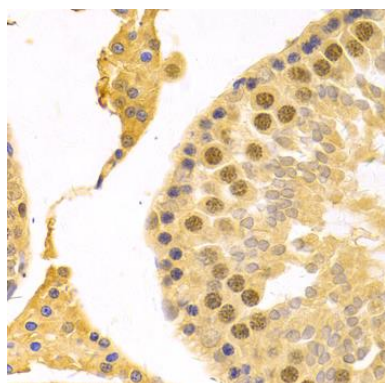
Storage:

Store at -20°C. Avoid freeze / thaw cycles. Buffer: PBS with 0.02% sodium azide, 50% glycerol, pH7.3.

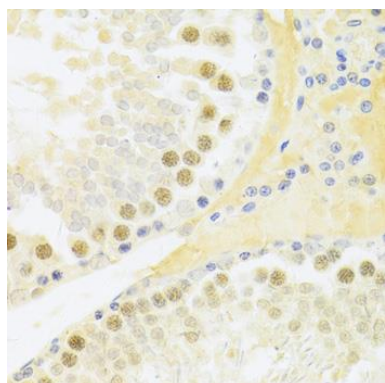
Product Images



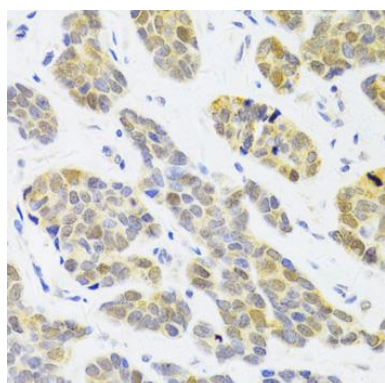
Western blot analysis of extracts of various cell lines, using RFC4 antibody (CAB5485) at 1:1000 dilution. Secondary antibody: HRP Goat Anti-Rabbit IgG (H+L) (CABS014) at 1:10000 dilution. Lysates/proteins: 25ug per lane. Blocking buffer: 3% nonfat dry milk in TBST. Detection: ECL Basic Kit (CABM00020). Exposure time: 10s.



Immunohistochemistry of paraffin-embedded rat testis using RFC4 Antibody (CAB5485) at dilution of 1:100 (40x lens).



Immunohistochemistry of paraffin-embedded rat testis using RFC4 Antibody (CAB5485) at dilution of 1:100 (40x lens).



Immunohistochemistry of paraffin-embedded human breast cancer using RFC4 Antibody (CAB5485) at dilution of 1:100 (40x lens).