

SNRPE Rabbit Polyclonal Antibody



CAB5488

Product Information

Size:

20uL, 50uL, 100uL, 200uL

Observed MW:

11kDa

Calculated MW:

10kDa

Applications:

WB IHC IF

Reactivity:

Human, Mouse, Rat

Protein Background

The protein encoded by this gene is a core component of U small nuclear ribonucleoproteins, which are key components of the pre-mRNA processing spliceosome. The encoded protein plays a role in the 3' end processing of histone transcripts. This protein is one of the targets in the autoimmune disease systemic lupus erythematosus, and mutations in this gene have been associated with hypotrichosis. Several pseudogenes of this gene have been identified.

Immunogen information

Gene ID:

6635

Uniprot

P62304

Synonyms:

SNRPE; HYPT11; SME; Sm-E; snRNP-E

Antibody Information

Recommended dilutions:

WB 1:500 - 1:2000 IHC 1:50
- 1:200 IF 1:50 - 1:200

Source:

Rabbit

Isotype:

IgG

Purification:

Affinity purification

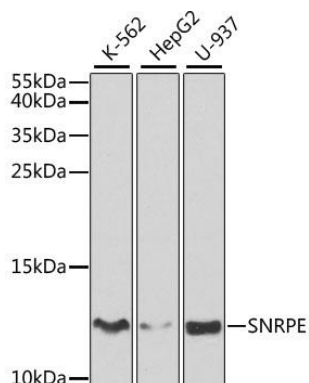
Immunogen:

Recombinant fusion protein containing a sequence corresponding to amino acids 1-92 of human SNRPE (NP_003085.1).

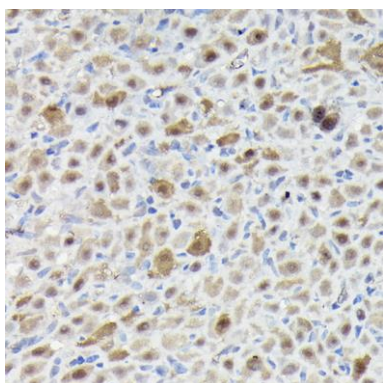
Storage:

Store at -20°C. Avoid freeze / thaw cycles. Buffer: PBS with 0.02% sodium azide, 50% glycerol, pH7.3.

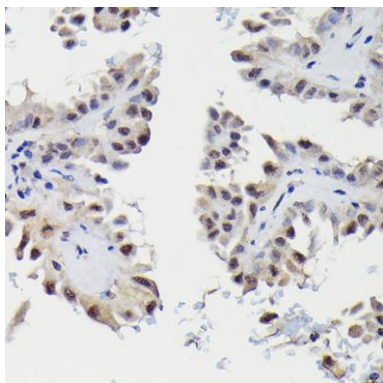
Product Images



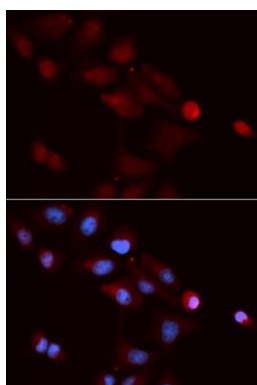
Western blot analysis of extracts of various cell lines, using SNRPE antibody (CAB5488) at 1:1000 dilution. Secondary antibody: HRP Goat Anti-Rabbit IgG (H+L) (CABS014) at 1:10000 dilution. Lysates/proteins: 25ug per lane. Blocking buffer: 3% nonfat dry milk in TBST. Detection: ECL Basic Kit (CABM00020). Exposure time: 60s.



Immunohistochemistry of paraffin-embedded rat ovary using SNRPE Rabbit pAb (CAB5488) at dilution of 1:50 (40x lens).



Immunohistochemistry of paraffin-embedded human thyroid cancer using SNRPE Rabbit pAb (CAB5488) at dilution of 1:50 (40x lens).



Immunofluorescence analysis of U2OS cells using SNRPE antibody (CAB5488). Blue: DAPI for nuclear staining.