

# UBE2C Rabbit Polyclonal Antibody



CAB5499

## Product Information

### Size:

20uL, 50uL, 100uL, 200uL

### Observed MW:

20kDa

### Calculated MW:

15kDa/16kDa/17kDa/19kDa

### Applications:

WB IHC IF IP

### Reactivity:

Human, Mouse, Rat

## Antibody Information

### Recommended dilutions:

WB 1:500 - 1:2000 IHC 1:50

- 1:200 IF 1:50 - 1:100 IP

1:20 - 1:50

### Source:

Rabbit

### Isotype:

IgG

### Purification:

Affinity purification

## Protein Background

The modification of proteins with ubiquitin is an important cellular mechanism for targeting abnormal or short-lived proteins for degradation. Ubiquitination involves at least three classes of enzymes: ubiquitin-activating enzymes, ubiquitin-conjugating enzymes, and ubiquitin-protein ligases. This gene encodes a member of the E2 ubiquitin-conjugating enzyme family. The encoded protein is required for the destruction of mitotic cyclins and for cell cycle progression, and may be involved in cancer progression. Multiple transcript variants encoding different isoforms have been found for this gene. Pseudogenes of this gene have been defined on chromosomes 4, 14, 15, 18, and 19.

## Immunogen information

### Gene ID:

11065

### Uniprot

O00762

### Synonyms:

UBE2C; UBCH10; dJ447F3.2

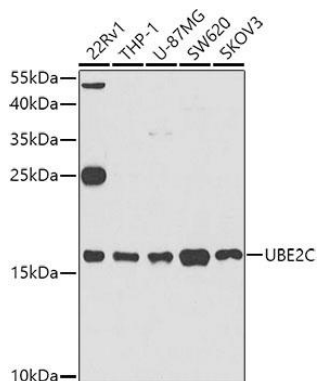
### Immunogen:

Recombinant fusion protein containing a sequence corresponding to amino acids 1-179 of human UBE2C (NP\_008950.1).

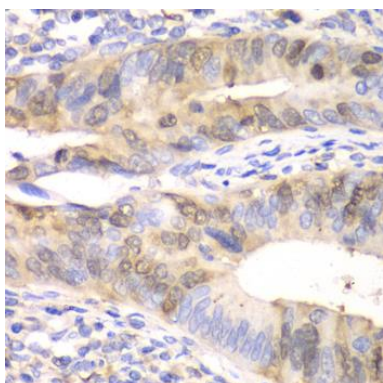
### Storage:

Store at -20°C. Avoid freeze / thaw cycles. Buffer: PBS with 0.02% sodium azide, 50% glycerol, pH7.3.

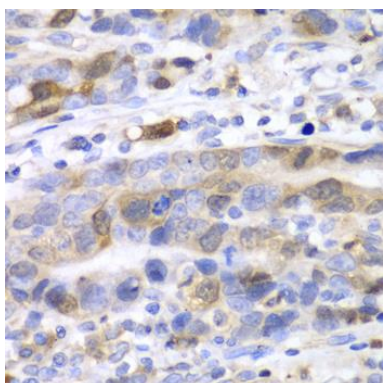
## Product Images



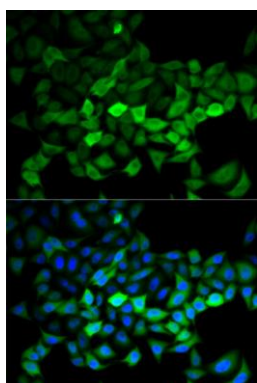
Western blot analysis of extracts of various cell lines, using UBE2C antibody (CAB5499) at 1:1000 dilution. Secondary antibody: HRP Goat Anti-Rabbit IgG (H+L) (CABS014) at 1:10000 dilution. Lysates/proteins: 25ug per lane. Blocking buffer: 3% nonfat dry milk in TBST. Detection: ECL Basic Kit (CABM00020). Exposure time: 60s.



Immunohistochemistry of paraffin-embedded human colon carcinoma using UBE2C antibody (CAB5499) at dilution of 1:100 (40x lens).



Immunohistochemistry of paraffin-embedded human gastric cancer using UBE2C antibody (CAB5499) at dilution of 1:100 (40x lens).



Immunofluorescence analysis of HeLa cells using UBE2C antibody (CAB5499). Blue: DAPI for nuclear staining.