

SLC3A1 Rabbit Polyclonal Antibody



CAB5500

Product Information

Size:

20uL, 50uL, 100uL, 200uL

Observed MW:

79kDa

Calculated MW:

35kDa/45kDa/46kDa/57kDa/
63kDa/65kDa/78kDa

Applications:

WB IHC IF

Reactivity:

Human, Mouse, Rat

Protein Background

This gene encodes a type II membrane glycoprotein which is one of the components of the renal amino acid transporter which transports neutral and basic amino acids in the renal tubule and intestinal tract. Mutations and deletions in this gene are associated with cystinuria. Alternatively spliced transcript variants have been described, but their biological validity has not been determined.

Immunogen information

Gene ID:

6519

Uniprot

Q07837

Synonyms:

SLC3A1; ATR1; CSNU1; D2H; NBAT; RBAT

Antibody Information

Recommended dilutions:

WB 1:500 - 1:2000 IHC 1:50
- 1:200 IF 1:50 - 1:200

Source:

Rabbit

Isotype:

IgG

Purification:

Affinity purification

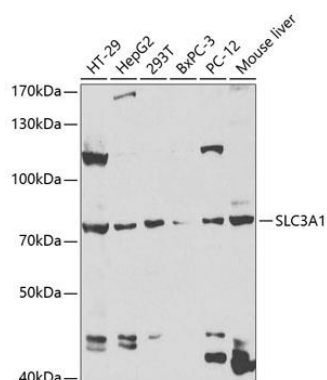
Immunogen:

Recombinant fusion protein containing a sequence corresponding to amino acids 416-685 of human SLC3A1 (NP_000332.2).

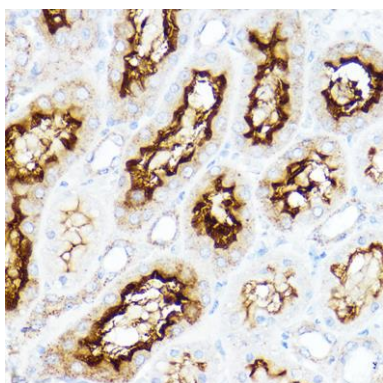
Storage:

Store at -20°C. Avoid freeze / thaw cycles. Buffer: PBS with 0.02% sodium azide, 50% glycerol, pH7.3.

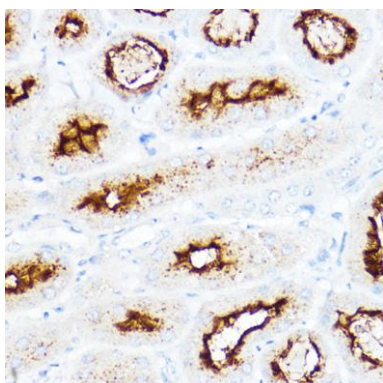
Product Images



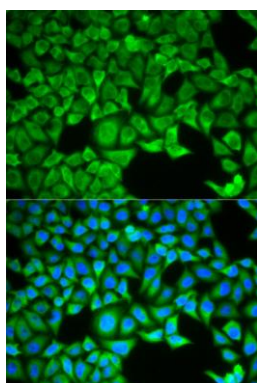
Western blot analysis of extracts of various cell lines, using SLC3A1 antibody (CAB5500) at 1:1000 dilution. Secondary antibody: HRP Goat Anti-Rabbit IgG (H+L) (CABS014) at 1:10000 dilution. Lysates/proteins: 25ug per lane. Blocking buffer: 3% nonfat dry milk in TBST. Detection: ECL Basic Kit (CABM00020). Exposure time: 90s.



Immunohistochemistry of paraffin-embedded rat kidney using SLC3A1 Rabbit pAb (CAB5500) at dilution of 1:200 (40x lens).



Immunohistochemistry of paraffin-embedded mouse kidney using SLC3A1 Rabbit pAb (CAB5500) at dilution of 1:200 (40x lens).



Immunofluorescence analysis of HeLa cells using SLC3A1 antibody (CAB5500). Blue: DAPI for nuclear staining.