

# DLL1 Rabbit Polyclonal Antibody



CAB5509

---

## Product Information

### Size:

50uL, 100uL, 200uL

### Observed MW:

78kDa

### Calculated MW:

27kDa/78kDa

### Applications:

WB

### Reactivity:

Human

## Protein Background

DLL1 is a human homolog of the Notch Delta ligand and is a member of the delta/serrate/jagged family. It plays a role in mediating cell fate decisions during hematopoiesis. It may play a role in cell-to-cell communication.

## Immunogen information

### Gene ID:

28514

### Uniprot

O00548

### Synonyms:

DLL1; DELTA1; DL1; Delta

## Antibody Information

### Recommended dilutions:

WB 1:500 - 1:2000

### Source:

Rabbit

### Isotype:

IgG

### Purification:

Affinity purification

### Immunogen:

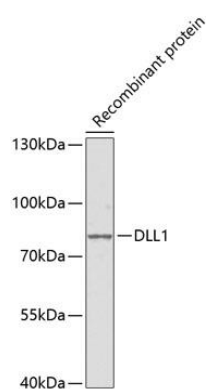
Recombinant protein of human DLL1

### Storage:

Store at -20°C. Avoid freeze / thaw cycles. Buffer: PBS with 0.02% sodium azide, 50% glycerol, pH7.3.

## Product Images

---



Western blot analysis of extracts of recombinant protein, using DLL1 antibody (CAB5509). Secondary antibody: HRP Goat Anti-Rabbit IgG (H+L) (CABS014) at 1:10000 dilution. Lysates/proteins: 25ug per lane. Blocking buffer: 3% nonfat dry milk in TBST.