

STAT3 Rabbit Polyclonal Antibody



CAB5511

Product Information

Size:

20uL, 50uL, 100uL, 200uL

Observed MW:

Calculated MW:

83kDa/87kDa/88kDa

Applications:

IHC

Reactivity:

Human, Mouse, Rat

Antibody Information

Recommended dilutions:

IHC 1:50 - 1:100

Source:

Rabbit

Isotype:

IgG

Purification:

Affinity purification

Protein Background

The protein encoded by this gene is a member of the STAT protein family. In response to cytokines and growth factors, STAT family members are phosphorylated by the receptor associated kinases, and then form homo- or heterodimers that translocate to the cell nucleus where they act as transcription activators. This protein is activated through phosphorylation in response to various cytokines and growth factors including IFNs, EGF, IL5, IL6, HGF, LIF and BMP2. This protein mediates the expression of a variety of genes in response to cell stimuli, and thus plays a key role in many cellular processes such as cell growth and apoptosis. The small GTPase Rac1 has been shown to bind and regulate the activity of this protein. PIAS3 protein is a specific inhibitor of this protein. Mutations in this gene are associated with infantile-onset multisystem autoimmune disease and hyper-immunoglobulin E syndrome. Alternative splicing results in multiple transcript variants encoding distinct isoforms.

Immunogen information

Gene ID:

6774

Uniprot

P40763

Synonyms:

ADMIO; ADMIO1; APRF; HIES; STAT3; Stat3

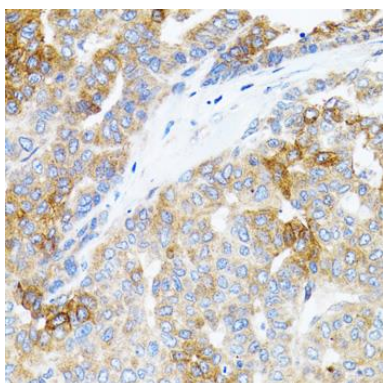
Immunogen:

Recombinant fusion protein containing a sequence corresponding to amino acids 40-240 of human STAT3 (NP_644805.1).

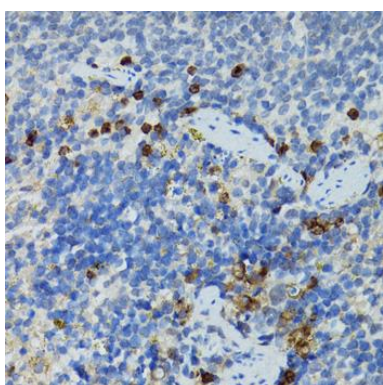
Storage:

Store at -20°C. Avoid freeze / thaw cycles. Buffer: PBS with 0.02% sodium azide, 50% glycerol, pH7.3.

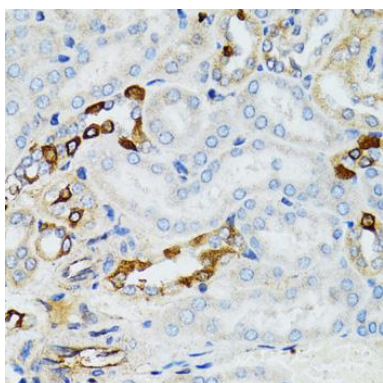
Product Images



Immunohistochemistry of paraffin-embedded human liver cancer using STAT3 antibody (CAB5511) at dilution of 1:100 (40x lens).



Immunohistochemistry of paraffin-embedded mouse spleen using STAT3 antibody (CAB5511) at dilution of 1:100 (40x lens).



Immunohistochemistry of paraffin-embedded mouse kidney using STAT3 antibody (CAB5511) at dilution of 1:100 (40x lens).