

# CDC25A Rabbit Polyclonal Antibody



CAB5527

---

## Product Information

### Size:

50uL, 100uL, 200uL

### Observed MW:

70kDa

### Calculated MW:

54kDa/59kDa

### Applications:

WB

### Reactivity:

Human, Mouse

## Protein Background

CDC25A is a member of the CDC25 family of phosphatases. CDC25A is required for progression from G1 to the S phase of the cell cycle. It activates the cyclin-dependent kinase CDC2 by removing two phosphate groups. CDC25A is specifically degraded in response to DNA damage, which prevents cells with chromosomal abnormalities from progressing through cell division. CDC25A is an oncogene, although its exact role in oncogenesis has not been demonstrated. Two transcript variants encoding different isoforms have been found for this gene.

## Immunogen information

### Gene ID:

993

### Uniprot

P30304

### Synonyms:

CDC25A; CDC25A2

## Antibody Information

### Recommended dilutions:

WB 1:500 - 1:1000

### Source:

Rabbit

### Isotype:

IgG

### Purification:

Affinity purification

### Immunogen:

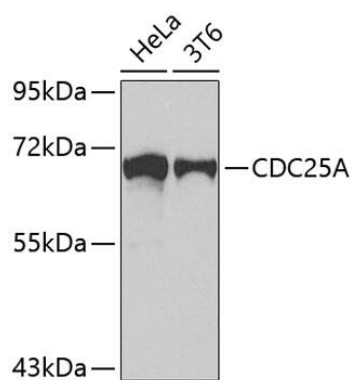
A synthetic peptide of human CDC25A

### Storage:

Store at -20°C. Avoid freeze / thaw cycles. Buffer: PBS with 0.02% sodium azide, 50% glycerol, pH7.3.

## Product Images

---



Western blot analysis of extracts of various cell lines, using CDC25A antibody (CAB5527). Secondary antibody: HRP Goat Anti-Rabbit IgG (H+L) (CABS014) at 1:10000 dilution. Lysates/proteins: 25ug per lane. Blocking buffer: 3% nonfat dry milk in TBST.