

# CBX6 Rabbit Polyclonal Antibody



CAB5533

---

## Product Information

### Size:

20uL, 50uL, 100uL, 200uL

### Observed MW:

50kDa

### Calculated MW:

43kDa

### Applications:

WB IHC

### Reactivity:

Human, Mouse, Rat

## Antibody Information

### Recommended dilutions:

WB 1:500 - 1:2000 IHC 1:50  
- 1:200

### Source:

Rabbit

### Isotype:

IgG

### Purification:

Affinity purification

## Protein Background

### Immunogen information

#### Gene ID:

23466

#### Uniprot

O95503

#### Synonyms:

CBX6

#### Immunogen:

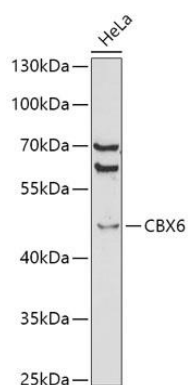
Recombinant fusion protein containing a sequence corresponding to amino acids 80-180 of human CBX6 (NP\_055107.3).

#### Storage:

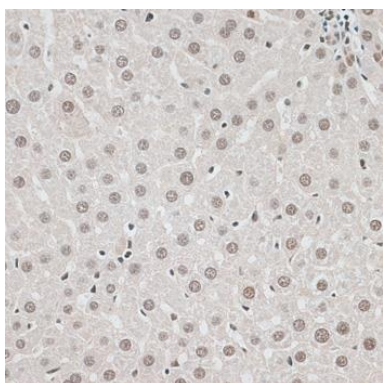
Store at -20°C. Avoid freeze / thaw cycles. Buffer: PBS with 0.02% sodium azide, 50% glycerol, pH7.3.

## Product Images

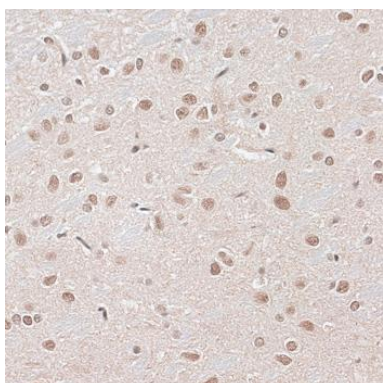
---



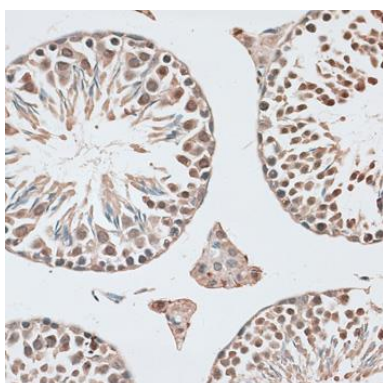
Western blot analysis of extracts of HeLa cells, using CBX6 antibody (CAB5533) at 1:1000 dilution. Secondary antibody: HRP Goat Anti-Rabbit IgG (H+L) (CABS014) at 1:10000 dilution. Lysates/proteins: 25ug per lane. Blocking buffer: 3% nonfat dry milk in TBST. Detection: ECL Basic Kit (CABM00020). Exposure time: 180s.



Immunohistochemistry of paraffin-embedded rat liver using CBX6 antibody (CAB5533) at dilution of 1:100 (40x lens).



Immunohistochemistry of paraffin-embedded rat brain using CBX6 antibody (CAB5533) at dilution of 1:100 (40x lens).



Immunohistochemistry of paraffin-embedded mouse testis using CBX6 antibody (CAB5533) at dilution of 1:100 (40x lens).