

RAC1 Rabbit Polyclonal Antibody



CAB5539

Product Information

Size:

50uL, 100uL, 200uL

Observed MW:

25kDa

Calculated MW:

21kDa/23kDa

Applications:

WB IF

Reactivity:

Human, Mouse, Rat

Protein Background

The protein encoded by this gene is a GTPase which belongs to the RAS superfamily of small GTP-binding proteins. Members of this superfamily appear to regulate a diverse array of cellular events, including the control of cell growth, cytoskeletal reorganization, and the activation of protein kinases. Two transcript variants encoding different isoforms have been found for this gene.

Immunogen information

Gene ID:

5879

Uniprot

P63000

Synonyms:

RAC1; MIG5; Rac-1; TC-25; p21-Rac1

Antibody Information

Recommended dilutions:

WB 1:500 - 1:1000 IF 1:50 - 1:200

Source:

Rabbit

Isotype:

IgG

Purification:

Affinity purification

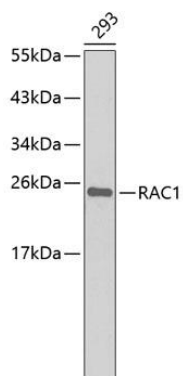
Immunogen:

A synthetic peptide of human RAC1

Storage:

Store at -20°C. Avoid freeze / thaw cycles. Buffer: PBS with 0.02% sodium azide, 50% glycerol, pH7.3.

Product Images



Western blot analysis of extracts of 293 cells, using RAC1 antibody (CAB5539). Secondary antibody: HRP Goat Anti-Rabbit IgG (H+L) (CABS014) at 1:10000 dilution. Lysates/proteins: 25ug per lane. Blocking buffer: 3% nonfat dry milk in TBST.