

TFCP2 Rabbit Polyclonal Antibody



CAB5555

Product Information

Size:

20uL, 50uL, 100uL, 200uL

Observed MW:

64kDa

Calculated MW:

51kDa/57kDa

Applications:

WB

Reactivity:

Human, Mouse

Protein Background

This gene encodes a transcription factor that binds the alpha-globin promoter and activates transcription of the alpha-globin gene. The encoded protein regulates erythroid gene expression, plays a role in the transcriptional switch of globin gene promoters, and it activates many other cellular and viral gene promoters. The gene product interacts with certain inflammatory response factors, and polymorphisms of this gene may be involved in the pathogenesis of Alzheimer's disease.

Immunogen information

Gene ID:

7024

Uniprot

Q12800

Synonyms:

TFCP2; LBP1C; LSF; LSF1D; SEF; TFCP2C

Antibody Information

Recommended dilutions:

WB 1:500 - 1:2000

Source:

Rabbit

Isotype:

IgG

Purification:

Affinity purification

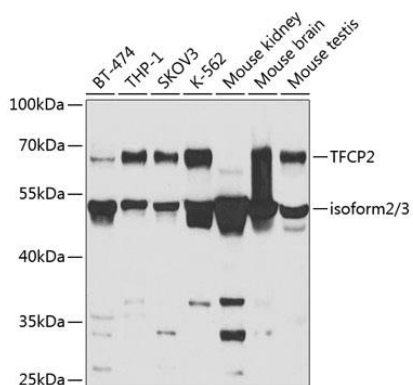
Immunogen:

Recombinant fusion protein containing a sequence corresponding to amino acids 1-280 of human TFCP2 (NP_005644.2).

Storage:

Store at -20°C. Avoid freeze / thaw cycles. Buffer: PBS with 0.02% sodium azide, 50% glycerol, pH7.3.

Product Images



Western blot analysis of extracts of various cell lines, using TFCP2 antibody (CAB5555) at 1:1000 dilution. Secondary antibody: HRP Goat Anti-Rabbit IgG (H+L) (CABS014) at 1:10000 dilution. Lysates/proteins: 25ug per lane. Blocking buffer: 3% nonfat dry milk in TBST. Detection: ECL Basic Kit (CABM00020). Exposure time: 5s.