

# CDC5L Rabbit Polyclonal Antibody



**CAB5560**

---

## Product Information

### Size:

20uL, 50uL, 100uL, 200uL

### Observed MW:

107kDa

### Calculated MW:

92kDa

### Applications:

WB IHC IF

### Reactivity:

Human, Mouse

## Protein Background

The protein encoded by this gene shares a significant similarity with *Schizosaccharomyces pombe cdc5* gene product, which is a cell cycle regulator important for G2/M transition. This protein has been demonstrated to act as a positive regulator of cell cycle G2/M progression. It was also found to be an essential component of a non-snRNA spliceosome, which contains at least five additional protein factors and is required for the second catalytic step of pre-mRNA splicing.

## Immunogen information

### Gene ID:

988

### Uniprot

Q99459

### Synonyms:

CDC5L; CDC5; CDC5-LIKE; CEF1; PCDC5RP; dJ319D22.1

## Antibody Information

### Recommended dilutions:

WB 1:500 - 1:2000 IHC 1:50  
- 1:200 IF 1:10 - 1:100

### Source:

Rabbit

### Isotype:

IgG

### Purification:

Affinity purification

### Immunogen:

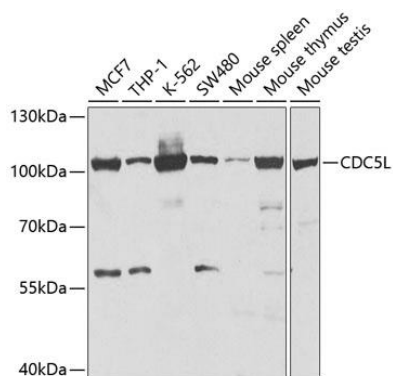
Recombinant fusion protein containing a sequence corresponding to amino acids 563-802 of human CDC5L (NP\_001244.1).

### Storage:

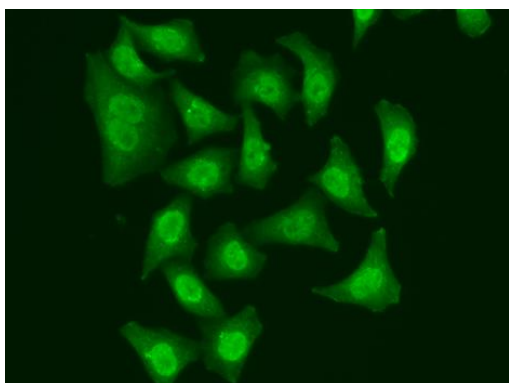
Store at -20°C. Avoid freeze / thaw cycles. Buffer: PBS with 0.02% sodium azide, 50% glycerol, pH7.3.

## Product Images

---



Western blot analysis of extracts of various cell lines, using CDC5L antibody (CAB5560) at 1:1000 dilution. Secondary antibody: HRP Goat Anti-Rabbit IgG (H+L) (CABS014) at 1:10000 dilution. Lysates/proteins: 25ug per lane. Blocking buffer: 3% nonfat dry milk in TBST.



Immunofluorescence analysis of A549 cells using CDC5L antibody (CAB5560).