

# RING1B/RNF2 Rabbit Polyclonal Antibody



CAB5563

## Product Information

### Size:

20uL, 50uL, 100uL, 200uL

### Observed MW:

38kDa

### Calculated MW:

29kDa/37kDa

### Applications:

WB IHC IF IP ChIP

### Reactivity:

Human, Mouse, Rat

## Antibody Information

### Recommended dilutions:

WB 1:500 - 1:2000 IHC 1:50  
- 1:200 IF 1:50 - 1:200 IP  
1:50 - 1:200 ChIP 1:50 -  
1:200

### Source:

Rabbit

### Isotype:

IgG

### Purification:

Affinity purification

## Protein Background

Polycomb group (PcG) of proteins form the multiprotein complexes that are important for the transcription repression of various genes involved in development and cell proliferation. The protein encoded by this gene is one of the PcG proteins. It has been shown to interact with, and suppress the activity of, transcription factor CP2 (TFCP2/CP2). Studies of the mouse counterpart suggested the involvement of this gene in the specification of anterior-posterior axis, as well as in cell proliferation in early development. This protein was also found to interact with huntingtin interacting protein 2 (HIP2), an ubiquitin-conjugating enzyme, and possess ubiquitin ligase activity.

## Immunogen information

### Gene ID:

6045

### Uniprot

Q99496

### Synonyms:

RNF2; BAP-1; BAP1; DING; HIP13; RING1B; RING2

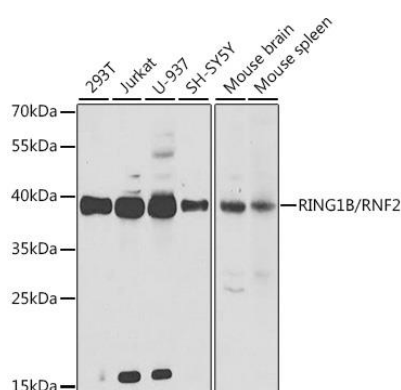
### Immunogen:

Recombinant fusion protein containing a sequence corresponding to amino acids 1-336 of human RING1B/RING1B/RNF2 (NP\_009143.1).

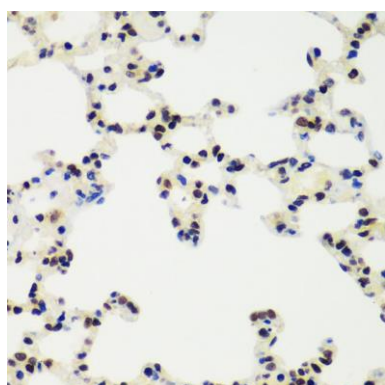
### Storage:

Store at -20°C. Avoid freeze / thaw cycles. Buffer: PBS with 0.02% sodium azide, 50% glycerol, pH7.3.

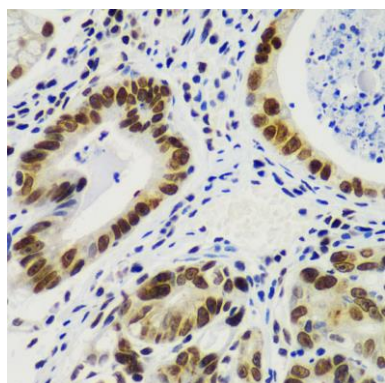
## Product Images



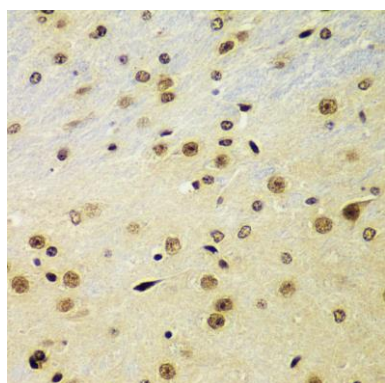
Western blot analysis of extracts of various cell lines, using RING1B/RNF2 antibody (CAB5563) at 1:1000 dilution. Secondary antibody: HRP Goat Anti-Rabbit IgG (H+L) (CABS014) at 1:10000 dilution. Lysates/proteins: 25ug per lane. Blocking buffer: 3% nonfat dry milk in TBST. Detection: ECL Basic Kit (CABM00020). Exposure time: 90s.



Immunohistochemistry of paraffin-embedded rat lung using RING1B/RNF2 antibody (CAB5563) at dilution of 1:100 (40x lens).



Immunohistochemistry of paraffin-embedded human gastric cancer using RING1B/RNF2 antibody (CAB5563) at dilution of 1:100 (40x lens).



Immunohistochemistry of paraffin-embedded mouse brain using RING1B/RNF2 antibody (CAB5563) at dilution of 1:100 (40x lens).