

SH2B1 Rabbit Polyclonal Antibody



CAB5564

Product Information

Size:

20uL, 50uL, 100uL, 200uL

Observed MW:

Calculated MW:

70kDa/72kDa/79kDa

Applications:

IHC IF

Reactivity:

Human, Mouse, Rat

Antibody Information

Recommended dilutions:

IHC 1:50 - 1:200 IF 1:20 - 1:50

Source:

Rabbit

Isotype:

IgG

Purification:

Affinity purification

Protein Background

This gene encodes a member of the SH2-domain containing mediators family. The encoded protein mediates activation of various kinases and may function in cytokine and growth factor receptor signaling and cellular transformation. Alternatively spliced transcript variants have been described.

Immunogen information

Gene ID:

25970

Uniprot

Q9NRF2

Synonyms:

SH2B1; PSM; SH2B

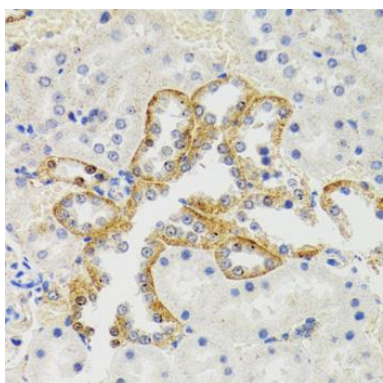
Immunogen:

Recombinant fusion protein containing a sequence corresponding to amino acids 360-520 of human SH2B1 (NP_056318.2).

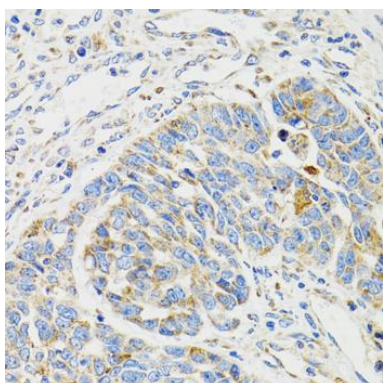
Storage:

Store at -20°C. Avoid freeze / thaw cycles. Buffer: PBS with 0.02% sodium azide, 50% glycerol, pH7.3.

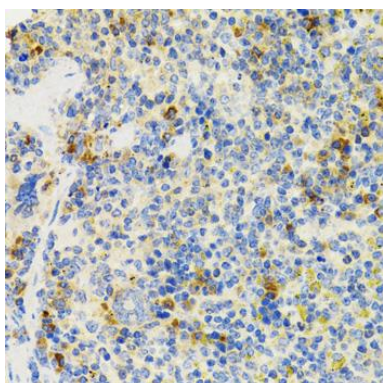
Product Images



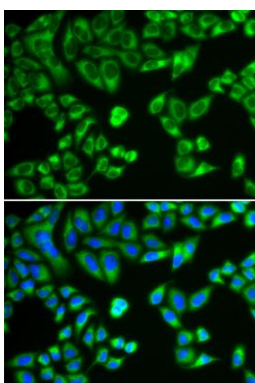
Immunohistochemistry of paraffin-embedded rat kidney using SH2B1 Antibody (CAB5564) at dilution of 1:100 (40x lens).



Immunohistochemistry of paraffin-embedded human esophageal cancer using SH2B1 Antibody (CAB5564) at dilution of 1:100 (40x lens).



Immunohistochemistry of paraffin-embedded mouse spleen using SH2B1 Antibody (CAB5564) at dilution of 1:100 (40x lens).



Immunofluorescence analysis of HeLa cells using SH2B1 antibody (CAB5564). Blue: DAPI for nuclear staining.