

WNK3 Rabbit Polyclonal Antibody



CAB5574

Product Information

Size:

20uL, 50uL, 100uL, 200uL

Observed MW:

40kDa

Calculated MW:

198kDa

Applications:

WB IHC

Reactivity:

Human, Mouse, Rat

Antibody Information

Recommended dilutions:

WB 1:500 - 1:2000 IHC 1:50
- 1:200

Source:

Rabbit

Isotype:

IgG

Purification:

Affinity purification

Protein Background

This gene encodes a protein belonging to the 'with no lysine' family of serine-threonine protein kinases. These family members lack the catalytic lysine in subdomain II, and instead have a conserved lysine in subdomain I. This family member functions as a positive regulator of the transcellular Ca²⁺ transport pathway, and it plays a role in the increase of cell survival in a caspase-3-dependent pathway. Alternative splicing results in multiple transcript variants.

Immunogen information

Gene ID:

317420

Uniprot

Synonyms:

WNK3; PRKWNK3

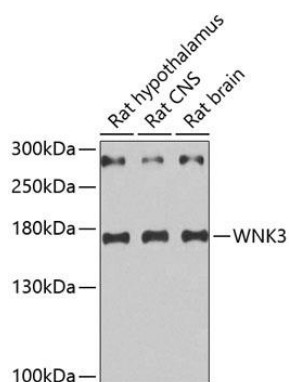
Immunogen:

Recombinant protein of rat WNK3

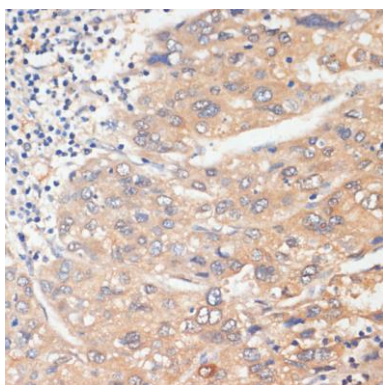
Storage:

Store at -20°C. Avoid freeze / thaw cycles. Buffer: PBS with 0.02% sodium azide, 50% glycerol, pH7.3.

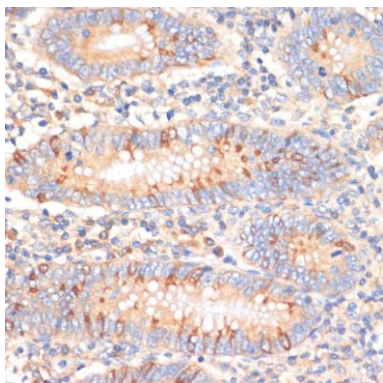
Product Images



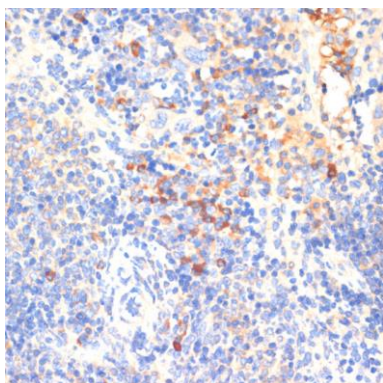
Western blot analysis of extracts of various cell lines, using WNK3 antibody (CAB5574). Secondary antibody: HRP Goat Anti-Rabbit IgG (H+L) (CABS014) at 1:10000 dilution. Lysates/proteins: 25ug per lane. Blocking buffer: 3% nonfat dry milk in TBST.



Immunohistochemistry of paraffin-embedded human liver cancer using WNK3 antibody (CAB5574) at dilution of 1:100 (40x lens).



Immunohistochemistry of paraffin-embedded human appendix using WNK3 antibody (CAB5574) at dilution of 1:100 (40x lens).



Immunohistochemistry of paraffin-embedded mouse spleen using WNK3 antibody (CAB5574) at dilution of 1:100 (40x lens).