

SKIV2L2 Rabbit Polyclonal Antibody



CAB5576

Product Information

Size:

20uL, 50uL, 100uL, 200uL

Observed MW:

123kDa

Calculated MW:

117kDa

Applications:

WB IHC IP

Reactivity:

Human, Mouse

Antibody Information

Recommended dilutions:

WB 1:500 - 1:2000 IHC 1:50
- 1:200 IP 1:50 - 1:200

Source:

Rabbit

Isotype:

IgG

Purification:

Affinity purification

Protein Background

Immunogen information

Gene ID:

23517

Uniprot

P42285

Synonyms:

SKIV2L2; Dob1; KIAA0052; Mtr4; fSAP118

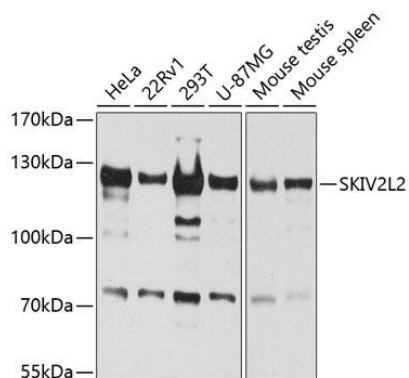
Immunogen:

Recombinant fusion protein containing a sequence corresponding to amino acids 1-304 of human SKIV2L2 (NP_056175.3).

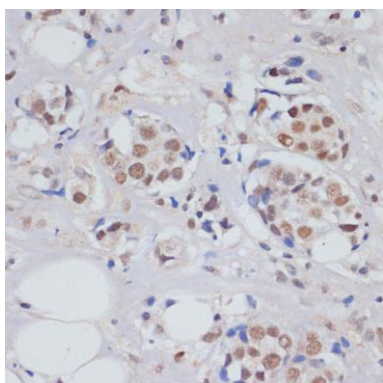
Storage:

Store at -20°C. Avoid freeze / thaw cycles. Buffer: PBS with 0.02% sodium azide, 50% glycerol, pH7.3.

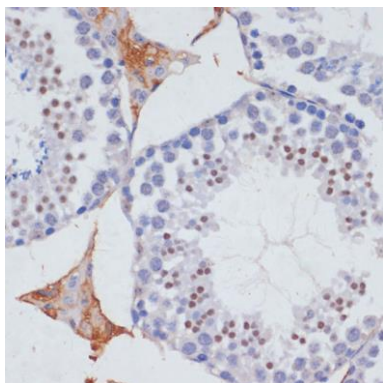
Product Images



Western blot analysis of extracts of various cell lines, using SKIV2L2 antibody (CAB5576) at 1:1000 dilution. Secondary antibody: HRP Goat Anti-Rabbit IgG (H+L) (CABS014) at 1:10000 dilution. Lysates/proteins: 25ug per lane. Blocking buffer: 3% nonfat dry milk in TBST. Detection: ECL Basic Kit (CABM00020). Exposure time: 60s.



Immunohistochemistry of paraffin-embedded human breast cancer using SKIV2L2 antibody (CAB5576) at dilution of 1:100 (40x lens).



Immunohistochemistry of paraffin-embedded mouse testis using SKIV2L2 antibody (CAB5576) at dilution of 1:100 (40x lens).