

WHSC1L1 Rabbit Polyclonal Antibody



CAB5577

Product Information

Size:

20uL, 50uL, 100uL, 200uL

Observed MW:

80-90kDa

Calculated MW:

72kDa/154kDa/156kDa/160kDa/161kDa

Applications:

WB IF

Reactivity:

Human, Mouse

Antibody Information

Recommended dilutions:

WB 1:500 - 1:2000 IF 1:50 - 1:200

Source:

Rabbit

Isotype:

IgG

Purification:

Affinity purification

Protein Background

This gene is related to the Wolf-Hirschhorn syndrome candidate-1 gene and encodes a protein with PWWP (proline-tryptophan-tryptophan-proline) domains. This protein methylates histone H3 at lysine residues 4 and 27, which represses gene transcription. Two alternatively spliced variants have been described.

Immunogen information

Gene ID:

54904

Uniprot

Q9BZ95

Synonyms:

NSD3; KMT3F; KMT3G; WHISTLE; WHSC1L1; pp14328

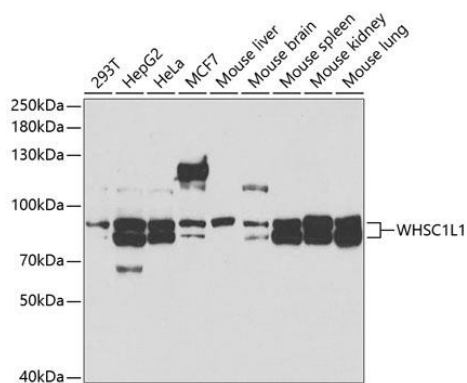
Immunogen:

Recombinant fusion protein containing a sequence corresponding to amino acids 1-270 of human WHSC1L1 (NP_060248.2).

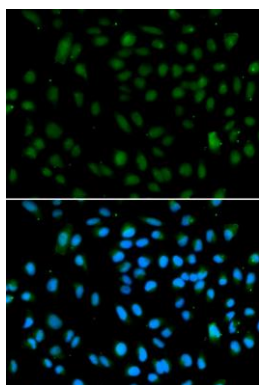
Storage:

Store at -20°C. Avoid freeze / thaw cycles. Buffer: PBS with 0.02% sodium azide, 50% glycerol, pH7.3.

Product Images



Western blot analysis of extracts of various cell lines, using WHSC1L1 antibody (CAB5577) at 1:1000 dilution. Secondary antibody: HRP Goat Anti-Rabbit IgG (H+L) (CABS014) at 1:10000 dilution. Lysates/proteins: 25ug per lane. Blocking buffer: 3% nonfat dry milk in TBST. Detection: ECL Basic Kit (CABM00020). Exposure time: 90s.



Immunofluorescence analysis of A549 cells using WHSC1L1 antibody (CAB5577). Blue: DAPI for nuclear staining.