

ZEB1 Rabbit Polyclonal Antibody



CAB5600

Product Information

Size:

20uL, 50uL, 100uL, 200uL

Observed MW:

124kDa

Calculated MW:

116kDa/122kDa/124kDa

Applications:

WB IHC IF

Reactivity:

Human, Mouse, Rat

Antibody Information

Recommended dilutions:

WB 1:500 - 1:2000 IHC 1:50
- 1:200 IF 1:50 - 1:200

Source:

Rabbit

Isotype:

IgG

Purification:

Affinity purification

Protein Background

This gene encodes a zinc finger transcription factor. The encoded protein likely plays a role in transcriptional repression of interleukin 2. Mutations in this gene have been associated with posterior polymorphous corneal dystrophy-3 and late-onset Fuchs endothelial corneal dystrophy. Alternatively spliced transcript variants encoding different isoforms have been described.

Immunogen information

Gene ID:

6935

Uniprot

P37275

Synonyms:

ZEB1; AREB6; BZP; DELTAEF1; FECD6; NIL2A; PPCD3; TCF8; ZFHEP;
ZFHX1A

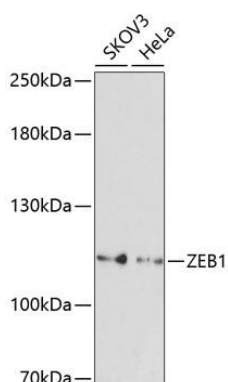
Immunogen:

Recombinant fusion protein containing a sequence corresponding to amino acids 1-260 of human ZEB1 (NP_001167567.1).

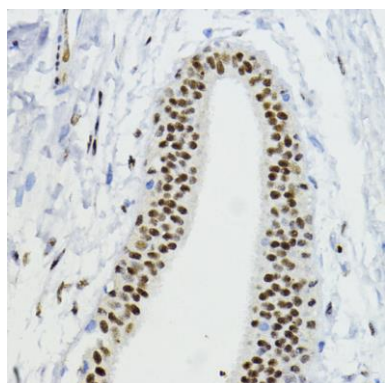
Storage:

Store at -20°C. Avoid freeze / thaw cycles. Buffer: PBS with 0.02% sodium azide, 50% glycerol, pH7.3.

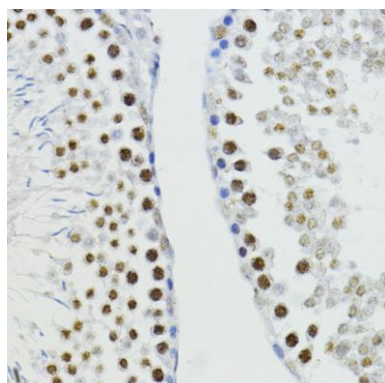
Product Images



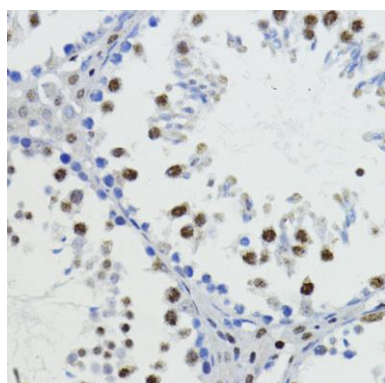
Western blot analysis of extracts of various cell lines, using ZEB1 antibody (CAB5600) at 1:1000 dilution. Secondary antibody: HRP Goat Anti-Rabbit IgG (H+L) (CABS014) at 1:10000 dilution. Lysates/proteins: 25ug per lane. Blocking buffer: 3% nonfat dry milk in TBST. Detection: ECL Enhanced Kit (CABM00021). Exposure time: 90s.



Immunohistochemistry of paraffin-embedded human mammary cancer using ZEB1 antibody (CAB5600) at dilution of 1:200 (40x lens).



Immunohistochemistry of paraffin-embedded rat testis using ZEB1 antibody (CAB5600) at dilution of 1:200 (40x lens).



Immunohistochemistry of paraffin-embedded mouse testis using ZEB1 antibody (CAB5600) at dilution of 1:200 (40x lens).