

HPX Rabbit Polyclonal Antibody



CAB5603

Product Information

Size:

20uL, 50uL, 100uL, 200uL

Observed MW:

68kDa

Calculated MW:

51kDa

Applications:

WB IHC IF

Reactivity:

Human, Mouse, Rat

Protein Background

This gene encodes a plasma glycoprotein that binds heme with high affinity. The encoded protein is an acute phase protein that transports heme from the plasma to the liver and may be involved in protecting cells from oxidative stress.

Immunogen information

Gene ID:

3263

Uniprot

P02790

Synonyms:

HPX; HX; hemopexin

Antibody Information

Recommended dilutions:

WB 1:500 - 1:2000 IHC 1:50
- 1:200 IF 1:10 - 1:100

Source:

Rabbit

Isotype:

IgG

Purification:

Affinity purification

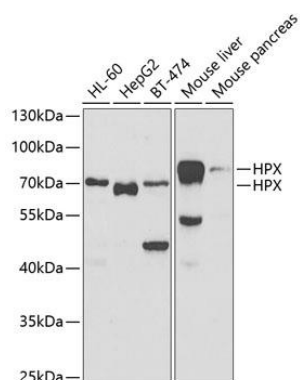
Immunogen:

Recombinant fusion protein containing a sequence corresponding to amino acids 24-245 of human HPX (NP_000604.1).

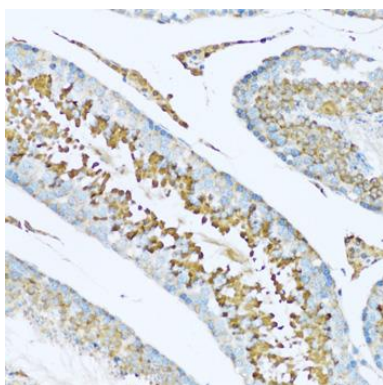
Storage:

Store at -20°C. Avoid freeze / thaw cycles. Buffer: PBS with 0.02% sodium azide, 50% glycerol, pH7.3.

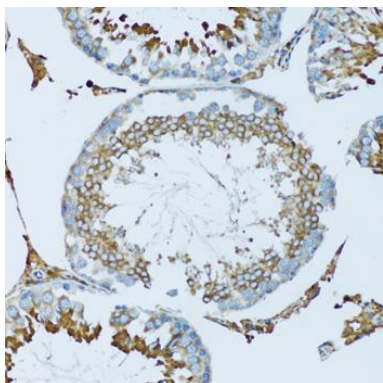
Product Images



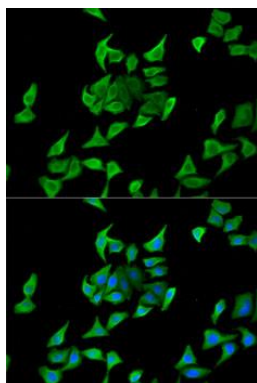
Western blot analysis of extracts of various cell lines, using HPX antibody (CAB5603) at 1:1000 dilution. Secondary antibody: HRP Goat Anti-Rabbit IgG (H+L) (CABS014) at 1:10000 dilution. Lysates/proteins: 25ug per lane. Blocking buffer: 3% nonfat dry milk in TBST. Detection: ECL Basic Kit (CABM00020). Exposure time: 90s.



Immunohistochemistry of paraffin-embedded rat testis using HPX antibody (CAB5603) at dilution of 1:100 (20x lens).



Immunohistochemistry of paraffin-embedded mouse testis using HPX antibody (CAB5603) at dilution of 1:100 (20x lens).



Immunofluorescence analysis of U2OS cells using HPX antibody (CAB5603). Blue: DAPI for nuclear staining.