

# LC3A/LC3B Rabbit Polyclonal Antibody



CAB5618

## Product Information

### Size:

20uL, 50uL, 100uL, 200uL

### Observed MW:

14kDa/16kDa

### Calculated MW:

14kDa

### Applications:

WB IHC IF

### Reactivity:

Human, Mouse, Rat

## Protein Background

MAP1A and MAP1B are microtubule-associated proteins which mediate the physical interactions between microtubules and components of the cytoskeleton. MAP1A and MAP1B each consist of a heavy chain subunit and multiple light chain subunits. The protein encoded by this gene is one of the light chain subunits and can associate with either MAP1A or MAP1B. Two transcript variants encoding different isoforms have been found for this gene. The expression of variant 1 is suppressed in many tumor cell lines, suggesting that may be involved in carcinogenesis.

## Immunogen information

### Gene ID:

84557/81631

### Uniprot

Q9GZQ8/Q9H492

### Synonyms:

MAP1LC3B; ATG8F; LC3B; MAP1A/1BLC3; MAP1LC3B-a;  
MAP1LC3A; ATG8E; LC3; LC3A; MAP1ALC3; MAP1BLC3; LC3A/LC3B

## Antibody Information

### Recommended dilutions:

WB 1:500 - 1:2000 IHC 1:50  
- 1:200 IF 1:50 - 1:200

### Source:

Rabbit

### Isotype:

IgG

### Immunogen:

Recombinant fusion protein containing a sequence corresponding to amino acids 1-121 of human LC3A (NP\_115903.1).

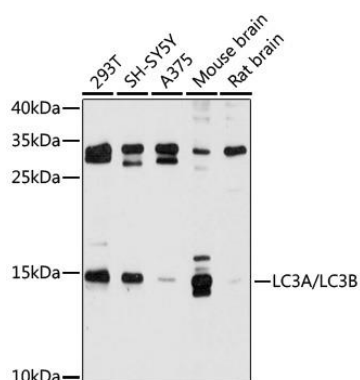
### Storage:

Store at -20°C. Avoid freeze / thaw cycles. Buffer: PBS with 0.02% sodium azide, 50% glycerol, pH7.3.

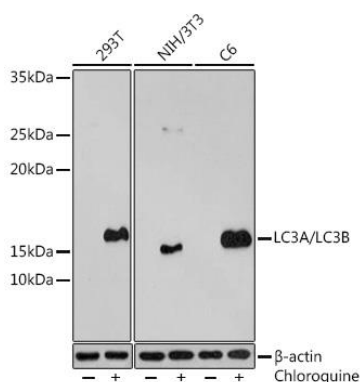
### Purification:

Affinity purification

## Product Images



Western blot analysis of extracts of various cell lines, using LC3A/LC3B antibody (CAB5618) at 1:500 dilution. Secondary antibody: HRP Goat Anti-Rabbit IgG (H+L) (CABS014) at 1:10000 dilution. Lysates/proteins: 25ug per lane. Blocking buffer: 3% nonfat dry milk in TBST. Detection: ECL Basic Kit (CABM00020). Exposure time: 20s.



Western blot analysis of extracts of various cell lines, using LC3A/LC3B antibody (CAB5618) at 1:500 dilution. 293T cells were treated by Chloroquine (50 uM) at 37°C for 20 hours. NIH/3T3 cells were treated by Chloroquine (50 uM) at 37°C for 20 hours. C6 cells were treated by Chloroquine (50 uM) at 37°C for 20 hours. Secondary antibody: HRP Goat Anti-Rabbit IgG (H+L) (CABS014) at 1:10000 dilution. Lysates/proteins: 25ug per lane. Blocking buffer: 3% BSA. Detection: ECL Enhanced Kit (CABM00021). Exposure time: 3min.