

# PGRMC1 Rabbit Polyclonal Antibody



CAB5619

## Product Information

### Size:

20uL, 50uL, 100uL, 200uL

### Observed MW:

24kDa

### Calculated MW:

15kDa/21kDa

### Applications:

WB IHC IF

### Reactivity:

Human, Mouse, Rat

## Antibody Information

### Recommended dilutions:

WB 1:500 - 1:2000 IHC 1:50  
- 1:100 IF 1:50 - 1:100

### Source:

Rabbit

### Isotype:

IgG

### Purification:

Affinity purification

## Protein Background

This gene encodes a putative membrane-associated progesterone steroid receptor. The protein is expressed predominantly in the liver and kidney.

## Immunogen information

### Gene ID:

10857

### Uniprot

O00264

### Synonyms:

PGRMC1; HPR6.6; MPR

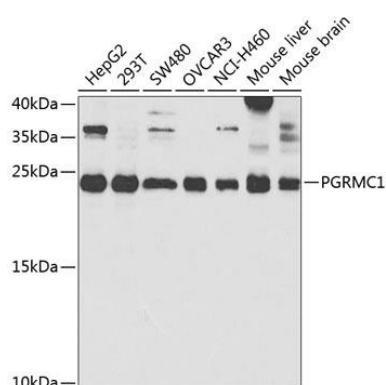
### Immunogen:

Recombinant fusion protein containing a sequence corresponding to amino acids 44-195 of human PGRMC1 (NP\_006658.1).

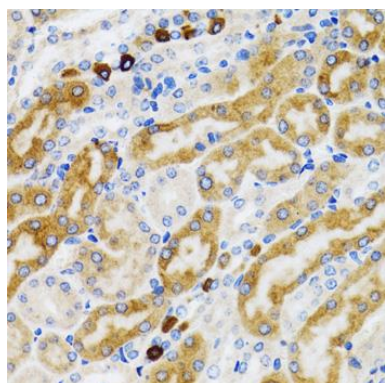
### Storage:

Store at -20°C. Avoid freeze / thaw cycles. Buffer: PBS with 0.02% sodium azide, 50% glycerol, pH7.3.

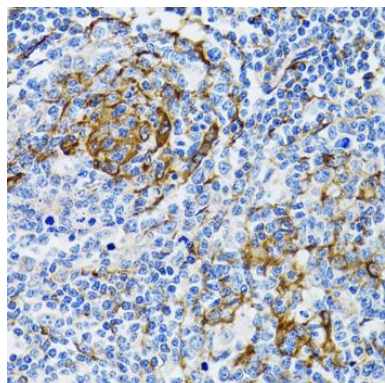
## Product Images



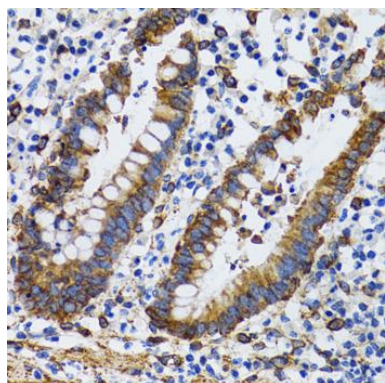
Western blot analysis of extracts of various cell lines, using PGRMC1 antibody (CAB5619) at 1:1000 dilution. Secondary antibody: HRP Goat Anti-Rabbit IgG (H+L) (CABS014) at 1:10000 dilution. Lysates/proteins: 25ug per lane. Blocking buffer: 3% nonfat dry milk in TBST. Detection: ECL Enhanced Kit (CABM00021). Exposure time: 90s.



Immunohistochemistry of paraffin-embedded rat kidney using PGRMC1 antibody (CAB5619) at dilution of 1:100 (40x lens).



Immunohistochemistry of paraffin-embedded human tonsil using PGRMC1 antibody (CAB5619) at dilution of 1:100 (40x lens).



Immunohistochemistry of paraffin-embedded human vermiform appendix using PGRMC1 antibody (CAB5619) at dilution of 1:100 (40x lens).