

GNRH1 Rabbit Polyclonal Antibody



CAB5625

Product Information

Size:

20uL, 50uL, 100uL, 200uL

Observed MW:

12kDa

Calculated MW:

10kDa

Applications:

WB IHC IF

Reactivity:

Human, Mouse, Rat

Protein Background

This gene encodes a preproprotein that is proteolytically processed to generate a peptide that is a member of the gonadotropin-releasing hormone (GnRH) family of peptides. Alternative splicing results in multiple transcript variants, at least one of which is secreted and then cleaved to generate gonadoliberin-1 and GnRH-associated peptide 1. Gonadoliberin-1 stimulates the release of luteinizing and follicle stimulating hormones, which are important for reproduction. Mutations in this gene are associated with hypogonadotropic hypogonadism.

Immunogen information

Gene ID:

2796

Uniprot

P01148

Synonyms:

GNRH1; GNRH; GRH; LHRH; LNRH

Antibody Information

Recommended dilutions:

WB 1:500 - 1:2000 IHC 1:50
- 1:100 IF 1:50 - 1:200

Source:

Rabbit

Isotype:

IgG

Purification:

Affinity purification

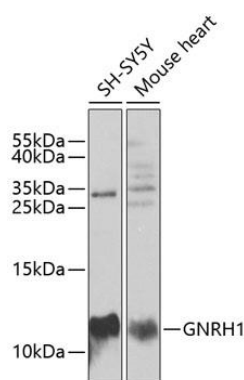
Immunogen:

Recombinant fusion protein containing a sequence corresponding to amino acids 24-92 of human GNRH1 (NP_001076580.1).

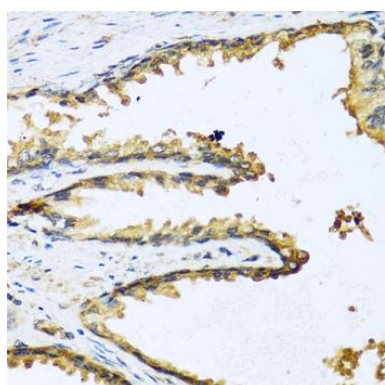
Storage:

Store at -20°C. Avoid freeze / thaw cycles. Buffer: PBS with 0.02% sodium azide, 50% glycerol, pH7.3.

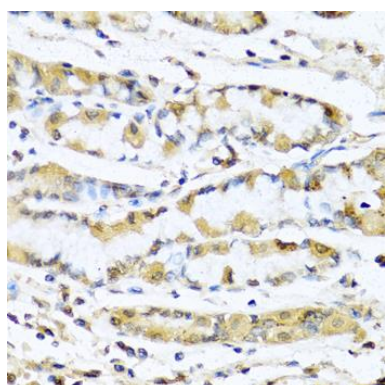
Product Images



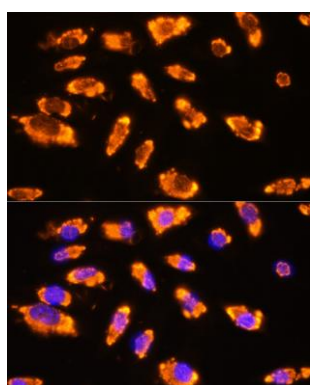
Western blot analysis of extracts of various cell lines, using GNRH1 antibody (CAB5625) at 1:1000 dilution. Secondary antibody: HRP Goat Anti-Rabbit IgG (H+L) (CABS014) at 1:10000 dilution. Lysates/proteins: 25ug per lane. Blocking buffer: 3% nonfat dry milk in TBST. Detection: ECL Basic Kit (CABM00020). Exposure time: 30s.



Immunohistochemistry of paraffin-embedded human prostate using GNRH1 antibody (CAB5625) at dilution of 1:100 (40x lens).



Immunohistochemistry of paraffin-embedded human stomach using GNRH1 antibody (CAB5625) at dilution of 1:100 (40x lens).



Immunofluorescence analysis of L929 cells using GNRH1 Rabbit pAb (CAB5625) at dilution of 1:100 (40x lens). Blue: DAPI for nuclear staining.