

APOC1 Rabbit Polyclonal Antibody



CAB5629

Product Information

Size:

20uL, 50uL, 100uL, 200uL

Observed MW:

Calculated MW:

9kDa

Applications:

IHC

Reactivity:

Human, Rat

Antibody Information

Recommended dilutions:

IHC 1:50 - 1:100

Source:

Rabbit

Isotype:

IgG

Purification:

Affinity purification

Protein Background

This gene encodes a member of the apolipoprotein C1 family. This gene is expressed primarily in the liver, and it is activated when monocytes differentiate into macrophages. The encoded protein plays a central role in high density lipoprotein (HDL) and very low density lipoprotein (VLDL) metabolism. This protein has also been shown to inhibit cholesteryl ester transfer protein in plasma. A pseudogene of this gene is located 4 kb downstream in the same orientation, on the same chromosome. This gene is mapped to chromosome 19, where it resides within a apolipoprotein gene cluster. Alternative splicing and the use of alternative promoters results in multiple transcript variants.

Immunogen information

Gene ID:

341

Uniprot

P02654

Synonyms:

APOC1; Apo-CI; ApoC-I; apo-CIB; apoC-IB

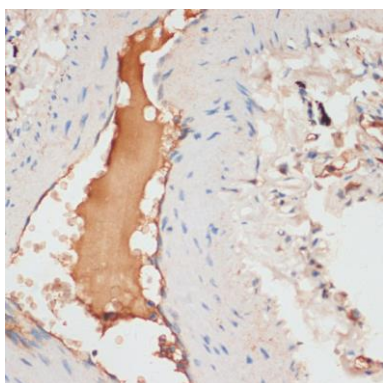
Immunogen:

Recombinant fusion protein containing a sequence corresponding to amino acids 1-83 of human APOC1 (NP_001636.1).

Storage:

Store at -20°C. Avoid freeze / thaw cycles. Buffer: PBS with 0.02% sodium azide, 50% glycerol, pH7.3.

Product Images



Immunohistochemistry of paraffin-embedded human lung using APOC1 antibody (CAB5629) at dilution of 1:100 (40x lens).