

# DDX3X Rabbit Polyclonal Antibody



CAB5637

## Product Information

### Size:

20uL, 50uL, 100uL, 200uL

### Observed MW:

75kDa

### Calculated MW:

71kDa/73kDa

### Applications:

WB IHC IF IP

### Reactivity:

Human, Mouse, Rat

## Antibody Information

### Recommended dilutions:

WB 1:500 - 1:2000 IHC 1:50  
- 1:200 IF 1:50 - 1:200 IP  
1:50 - 1:200

### Source:

Rabbit

### Isotype:

IgG

### Purification:

Affinity purification

## Protein Background

The protein encoded by this gene is a member of the large DEAD-box protein family, that is defined by the presence of the conserved Asp-Glu-Ala-Asp (DEAD) motif, and has ATP-dependent RNA helicase activity. This protein has been reported to display a high level of RNA-independent ATPase activity, and unlike most DEAD-box helicases, the ATPase activity is thought to be stimulated by both RNA and DNA. This protein has multiple conserved domains and is thought to play roles in both the nucleus and cytoplasm. Nuclear roles include transcriptional regulation, mRNP assembly, pre-mRNA splicing, and mRNA export. In the cytoplasm, this protein is thought to be involved in translation, cellular signaling, and viral replication. Misregulation of this gene has been implicated in tumorigenesis. This gene has a paralog located in the nonrecombining region of the Y chromosome. Pseudogenes sharing similarity to both this gene and the DDX3Y paralog are found on chromosome 4 and the X chromosome. Alternative splicing results in multiple transcript variants.

## Immunogen information

### Gene ID:

1654

### Uniprot

O00571

### Synonyms:

DDX3X; CAP-Rf; DBX; DDX14; DDX3; HLP2; MRX102

### Immunogen:

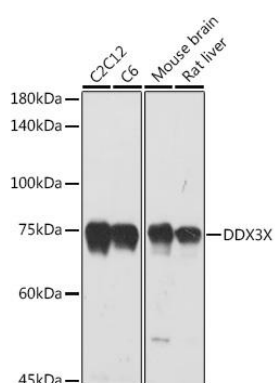
Recombinant fusion protein containing a sequence corresponding to amino acids 1-220 of human DDX3X (NP\_001347.3).

### Storage:

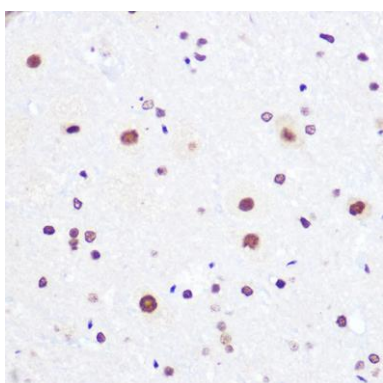
Store at -20°C. Avoid freeze / thaw cycles. Buffer: PBS with 0.02% sodium azide, 50% glycerol, pH7.3.

## Product Images

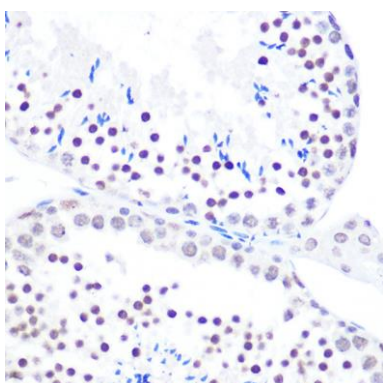
---



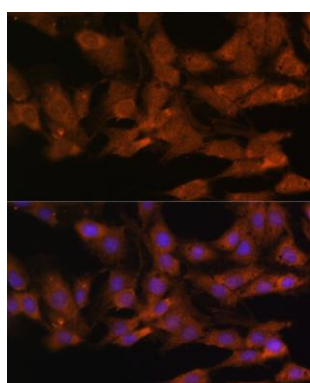
Western blot analysis of extracts of various cell lines, using DDX3X antibody (CAB5637) at 1:1000 dilution. Secondary antibody: HRP Goat Anti-Rabbit IgG (H+L) (CABS014) at 1:10000 dilution. Lysates/proteins: 25ug per lane. Blocking buffer: 3% nonfat dry milk in TBST. Detection: ECL Enhanced Kit (RM00061). Exposure time: 3s.



Immunohistochemistry of paraffin-embedded rat brain using DDX3X Rabbit pAb (CAB5637) at dilution of 1:100 (40x lens).



Immunohistochemistry of paraffin-embedded mouse testis using DDX3X Rabbit pAb (CAB5637) at dilution of 1:100 (40x lens).



Immunofluorescence analysis of C6 cells using DDX3X antibody (CAB5637) at dilution of 1:100. Blue: DAPI for nuclear staining.