

# [KO Validated] ECE1 Rabbit Polyclonal Antibody



**CAB5638**

---

## Product Information

### Size:

20uL, 50uL, 100uL, 200uL

### Observed MW:

130kDa

### Calculated MW:

85kDa/87kDa

### Applications:

WB IHC IF

### Reactivity:

Human, Mouse, Rat

## Protein Background

The protein encoded by this gene is involved in proteolytic processing of endothelin precursors to biologically active peptides. Mutations in this gene are associated with Hirschsprung disease, cardiac defects and autonomic dysfunction. Alternatively spliced transcript variants encoding different isoforms have been noted for this gene.

## Immunogen information

### Gene ID:

1889

### Uniprot

P42892

### Synonyms:

ECE1; ECE

## Antibody Information

### Recommended dilutions:

WB 1:500 - 1:2000 IHC 1:50  
- 1:100 IF 1:50 - 1:100

### Source:

Rabbit

### Isotype:

IgG

### Purification:

Affinity purification

### Immunogen:

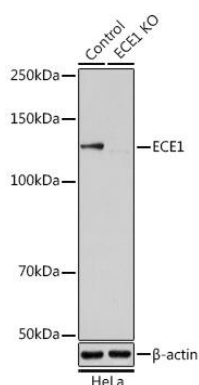
Recombinant fusion protein containing a sequence corresponding to amino acids 670-770 of human ECE1 (NP\_001388.1).

### Storage:

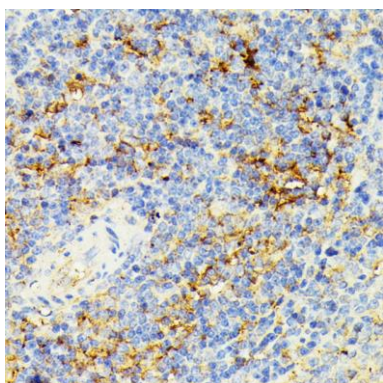
Store at -20°C. Avoid freeze / thaw cycles. Buffer: PBS with 0.02% sodium azide, 50% glycerol, pH7.3.

## Product Images

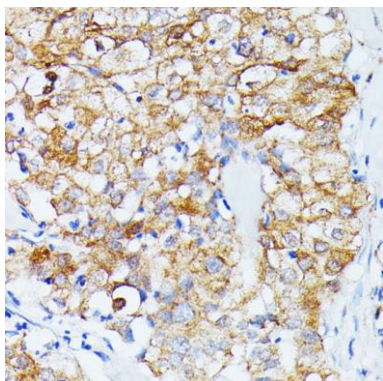
---



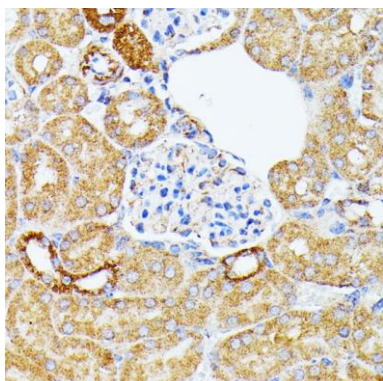
Western blot analysis of extracts from normal (control) and ECE1 knockout (KO) HeLa cells, using ECE1 antibody (CAB5638) at 1:1000 dilution. Secondary antibody: HRP Goat Anti-Rabbit IgG (H+L) (CABS014) at 1:10000 dilution. Lysates/proteins: 25ug per lane. Blocking buffer: 3% nonfat dry milk in TBST. Detection: ECL Basic Kit (CABM00020). Exposure time: 5s.



Immunohistochemistry of paraffin-embedded rat spleen using ECE1 antibody (CAB5638) at dilution of 1:100 (40x lens).



Immunohistochemistry of paraffin-embedded human mammary cancer using ECE1 antibody (CAB5638) at dilution of 1:100 (40x lens).



Immunohistochemistry of paraffin-embedded mouse kidney using ECE1 antibody (CAB5638) at dilution of 1:100 (40x lens).