

# ERCC2 Rabbit Polyclonal Antibody



CAB5640

## Product Information

### Size:

20uL, 50uL, 100uL, 200uL

### Observed MW:

87kDa

### Calculated MW:

46kDa/86kDa

### Applications:

WB IF

### Reactivity:

Human, Rat

## Antibody Information

### Recommended dilutions:

WB 1:500 - 1:2000 IF 1:50 - 1:100

### Source:

Rabbit

### Isotype:

IgG

### Purification:

Affinity purification

## Protein Background

The nucleotide excision repair pathway is a mechanism to repair damage to DNA. The protein encoded by this gene is involved in transcription-coupled nucleotide excision repair and is an integral member of the basal transcription factor BTF2/TFIIH complex. The gene product has ATP-dependent DNA helicase activity and belongs to the RAD3/XPD subfamily of helicases. Defects in this gene can result in three different disorders, the cancer-prone syndrome xeroderma pigmentosum complementation group D, trichothiodystrophy, and Cockayne syndrome. Alternatively spliced transcript variants encoding different isoforms have been found for this gene.

## Immunogen information

### Gene ID:

2068

### Uniprot

P18074

### Synonyms:

ERCC2; COFS2; EM9; TFIIH; TTD; TTD1; XPD

### Immunogen:

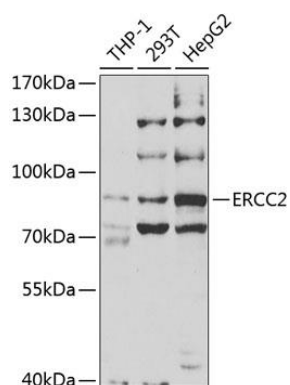
Recombinant fusion protein containing a sequence corresponding to amino acids 1-300 of human ERCC2 (NP\_001124339.1).

### Storage:

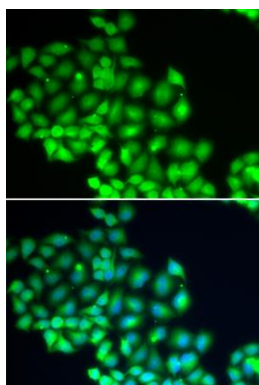
Store at -20°C. Avoid freeze / thaw cycles. Buffer: PBS with 0.02% sodium azide, 50% glycerol, pH7.3.

## Product Images

---



Western blot analysis of extracts of various cell lines, using ERCC2 antibody (CAB5640) at 1:1000 dilution. Secondary antibody: HRP Goat Anti-Rabbit IgG (H+L) (CABS014) at 1:10000 dilution. Lysates/proteins: 25ug per lane. Blocking buffer: 3% nonfat dry milk in TBST.



Immunofluorescence analysis of HeLa cells using ERCC2 antibody (CAB5640). Blue: DAPI for nuclear staining.