

# FLI1 Rabbit Polyclonal Antibody



CAB5644

## Product Information

### Size:

20uL, 50uL, 100uL, 200uL

### Observed MW:

53kDa

### Calculated MW:

29kDa/43kDa/47kDa/50kDa

### Applications:

WB IHC IP

### Reactivity:

Human

## Antibody Information

### Recommended dilutions:

WB 1:500 - 1:2000 IHC 1:50  
- 1:200 IP 1:50 - 1:200

### Source:

Rabbit

### Isotype:

IgG

### Purification:

Affinity purification

## Protein Background

This gene encodes a transcription factor containing an ETS DNA-binding domain. The gene can undergo a t(11;22)(q24;q12) translocation with the Ewing sarcoma gene on chromosome 22, which results in a fusion gene that is present in the majority of Ewing sarcoma cases. An acute lymphoblastic leukemia-associated t(4;11)(q21;q23) translocation involving this gene has also been identified. Alternative splicing results in multiple transcript variants.

## Immunogen information

### Gene ID:

2313

### Uniprot

Q01543

### Synonyms:

FLI1; EWSR2; SIC-1; BDPLT21

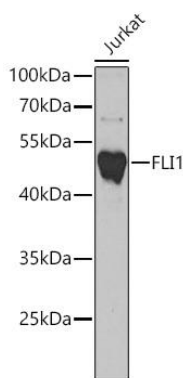
### Immunogen:

Recombinant fusion protein containing a sequence corresponding to amino acids 1-100 of human FLI1 (NP\_002008.2).

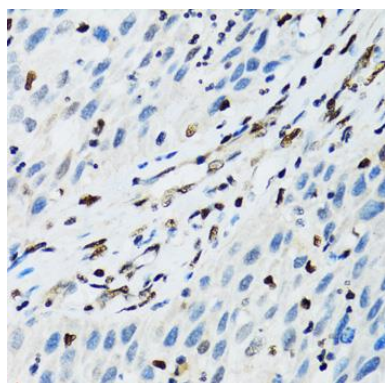
### Storage:

Store at -20°C. Avoid freeze / thaw cycles. Buffer: PBS with 0.02% sodium azide, 50% glycerol, pH7.3.

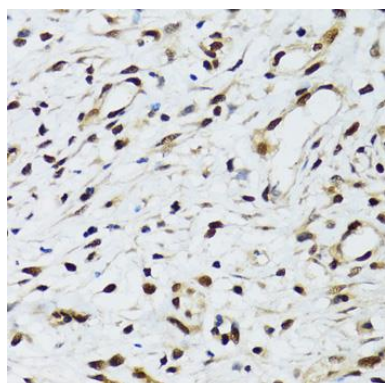
## Product Images



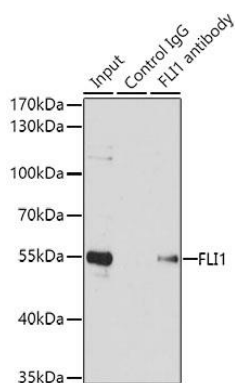
Western blot analysis of extracts of Jurkat cells, using FLI1 antibody (CAB5644) at 1:1000 dilution. Secondary antibody: HRP Goat Anti-Rabbit IgG (H+L) (CABS014) at 1:10000 dilution. Lysates/proteins: 25ug per lane. Blocking buffer: 3% nonfat dry milk in TBST. Detection: ECL Basic Kit (CABM00020). Exposure time: 90s.



Immunohistochemistry of paraffin-embedded human lung cancer using FLI1 antibody (CAB5644) at dilution of 1:100 (40x lens).



Immunohistochemistry of paraffin-embedded human uterine cancer using FLI1 antibody (CAB5644) at dilution of 1:100 (40x lens).



Immunoprecipitation analysis of 200ug extracts of Jurkat cells using 1ug FLI1 antibody (CAB5644). Western blot was performed from the immunoprecipitate using FLI1 antibody (CAB5644) at a dilution of 1:1000.