

IFNL3 Rabbit Polyclonal Antibody



CAB5648

Product Information

Size:

20uL, 50uL, 100uL, 200uL

Observed MW:

22kDa

Calculated MW:

21kDa

Applications:

WB IHC

Reactivity:

Human, Mouse

Protein Background

This gene encodes a cytokine distantly related to type I interferons and the IL-10 family. This gene, interleukin 28A (IL28A), and interleukin 29 (IL29) are three closely related cytokine genes that form a cytokine gene cluster on a chromosomal region mapped to 19q13. Expression of the cytokines encoded by the three genes can be induced by viral infection. All three cytokines have been shown to interact with a heterodimeric class II cytokine receptor that consists of interleukin 10 receptor, beta (IL10RB) and interleukin 28 receptor, alpha (IL28RA).

Immunogen information

Gene ID:

282617

Uniprot

Q8IZI9

Synonyms:

IFNL3; IFN-lambda-3; IFN-lambda-4; IL-28B; IL-28C; IL28B; IL28C

Antibody Information

Recommended dilutions:

WB 1:500 - 1:2000 IHC 1:50
- 1:100

Source:

Rabbit

Isotype:

IgG

Purification:

Affinity purification

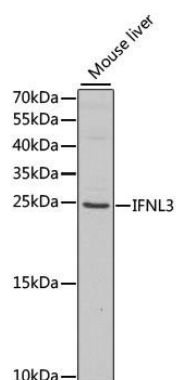
Immunogen:

Recombinant fusion protein containing a sequence corresponding to amino acids 22-196 of human IFNL3 (NP_742151.2).

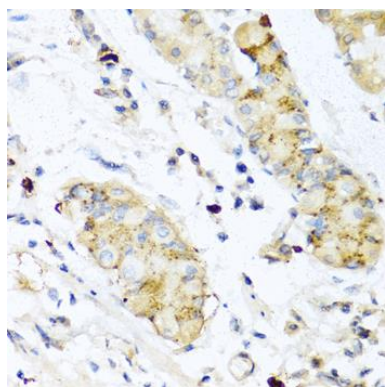
Storage:

Store at -20°C. Avoid freeze / thaw cycles. Buffer: PBS with 0.02% sodium azide, 50% glycerol, pH7.3.

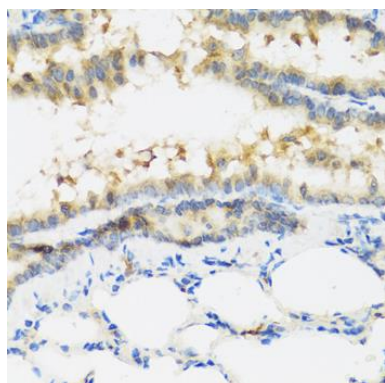
Product Images



Western blot analysis of extracts of mouse liver, using IFNL3 antibody (CAB5648) at 1:1000 dilution. Secondary antibody: HRP Goat Anti-Rabbit IgG (H+L) (CABS014) at 1:10000 dilution. Lysates/proteins: 25ug per lane. Blocking buffer: 3% nonfat dry milk in TBST. Detection: ECL Enhanced Kit (CABM00021). Exposure time: 90s.



Immunohistochemistry of paraffin-embedded human stomach using IFNL3 antibody (CAB5648) at dilution of 1:100 (40x lens).



Immunohistochemistry of paraffin-embedded mouse lung using IFNL3 antibody (CAB5648) at dilution of 1:100 (40x lens).