

LEP Rabbit Polyclonal Antibody



CAB5673

Product Information

Size:

20uL, 50uL, 100uL, 200uL

Observed MW:

Calculated MW:

18kDa

Applications:

IHC

Reactivity:

Human

Antibody Information

Recommended dilutions:

IHC 1:50 - 1:200

Source:

Rabbit

Isotype:

IgG

Purification:

Affinity purification

Protein Background

This gene encodes a protein that is secreted by white adipocytes, and which plays a major role in the regulation of body weight. This protein, which acts through the leptin receptor, functions as part of a signaling pathway that can inhibit food intake and/or regulate energy expenditure to maintain constancy of the adipose mass. This protein also has several endocrine functions, and is involved in the regulation of immune and inflammatory responses, hematopoiesis, angiogenesis and wound healing. Mutations in this gene and/or its regulatory regions cause severe obesity, and morbid obesity with hypogonadism. This gene has also been linked to type 2 diabetes mellitus development.

Immunogen information

Gene ID:

3952

Uniprot

P41159

Synonyms:

LEP; LEPD; OB; OBS; leptin

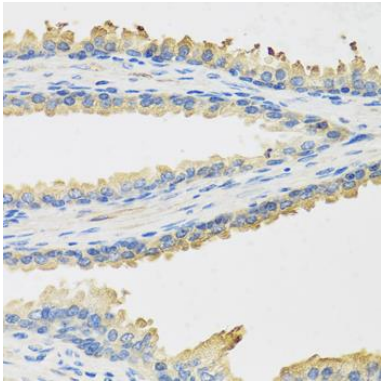
Immunogen:

Recombinant fusion protein containing a sequence corresponding to amino acids 22-167 of human LEP (NP_000221.1).

Storage:

Store at -20°C. Avoid freeze / thaw cycles. Buffer: PBS with 0.02% sodium azide, 50% glycerol, pH7.3.

Product Images



Immunohistochemistry of paraffin-embedded human prostate using LEP antibody (CAB5673) at dilution of 1:100 (40x lens).