

# MECOM Rabbit Polyclonal Antibody



CAB5674

---

## Product Information

### Size:

20uL, 50uL, 100uL, 200uL

### Observed MW:

19kDa

### Calculated MW:

18kDa/117kDa/118kDa/125kDa/139kDa

### Applications:

WB

### Reactivity:

Mouse

## Antibody Information

### Recommended dilutions:

WB 1:500 - 1:2000

### Source:

Rabbit

### Isotype:

IgG

### Purification:

Affinity purification

## Protein Background

The protein encoded by this gene is a transcriptional regulator and oncoprotein that may be involved in hematopoiesis, apoptosis, development, and cell differentiation and proliferation. The encoded protein can interact with CTBP1, SMAD3, CREBBP, KAT2B, MAPK8, and MAPK9. This gene can undergo translocation with the AML1 gene, resulting in overexpression of this gene and the onset of leukemia. Several transcript variants encoding a few different isoforms have been found for this gene.

## Immunogen information

### Gene ID:

2122

### Uniprot

Q03112/Q13465

### Synonyms:

MECOM; AML1-EVI-1; EVI1; KMT8E; MDS1; MDS1-EVI1; PRDM3; RUSAT2

### Immunogen:

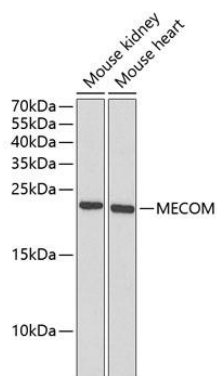
Recombinant fusion protein containing a sequence corresponding to amino acids 1-120 of human MECOM (NP\_004982.2).

### Storage:

Store at -20°C. Avoid freeze / thaw cycles. Buffer: PBS with 0.02% sodium azide, 50% glycerol, pH7.3.

## Product Images

---



Western blot analysis of extracts of various cell lines, using MECOM antibody (CAB5674) at 1:1000 dilution. Secondary antibody: HRP Goat Anti-Rabbit IgG (H+L) (CABS014) at 1:10000 dilution. Lysates/proteins: 25ug per lane. Blocking buffer: 3% nonfat dry milk in TBST. Detection: ECL Basic Kit (CABM00020). Exposure time: 90s.